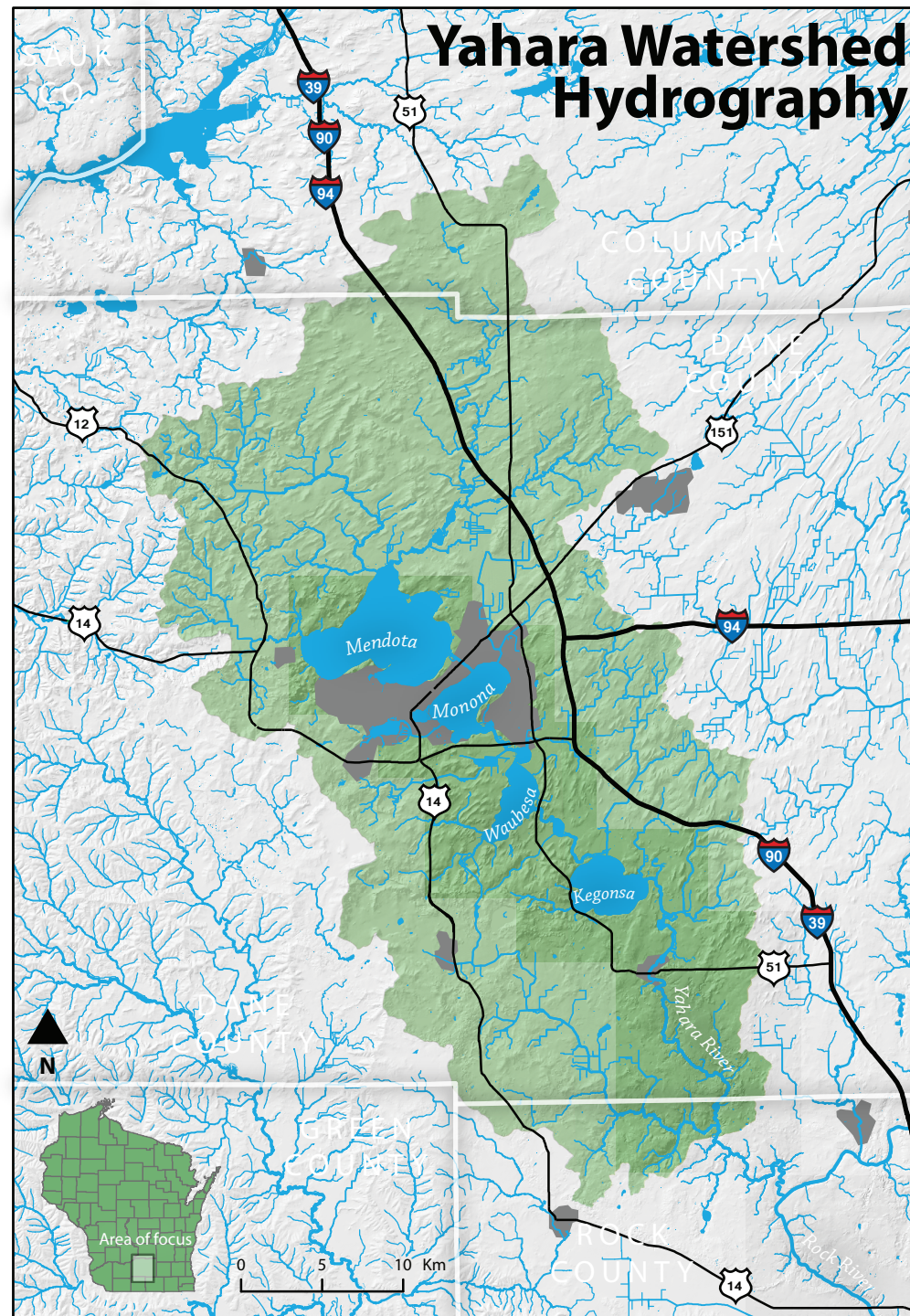
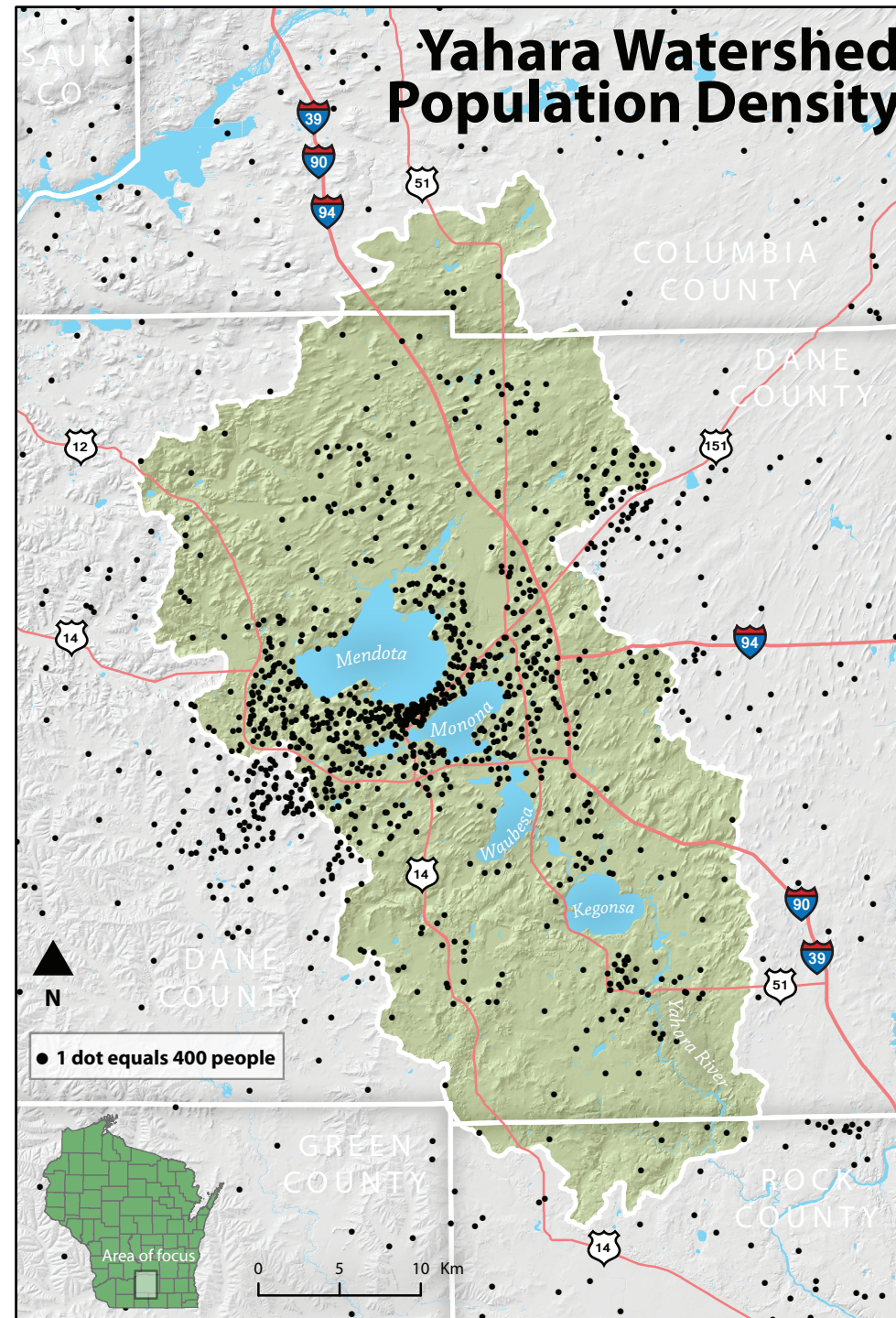


Mapping a Watershed: Three Views of the Yahara Watershed for Public Outreach and Education

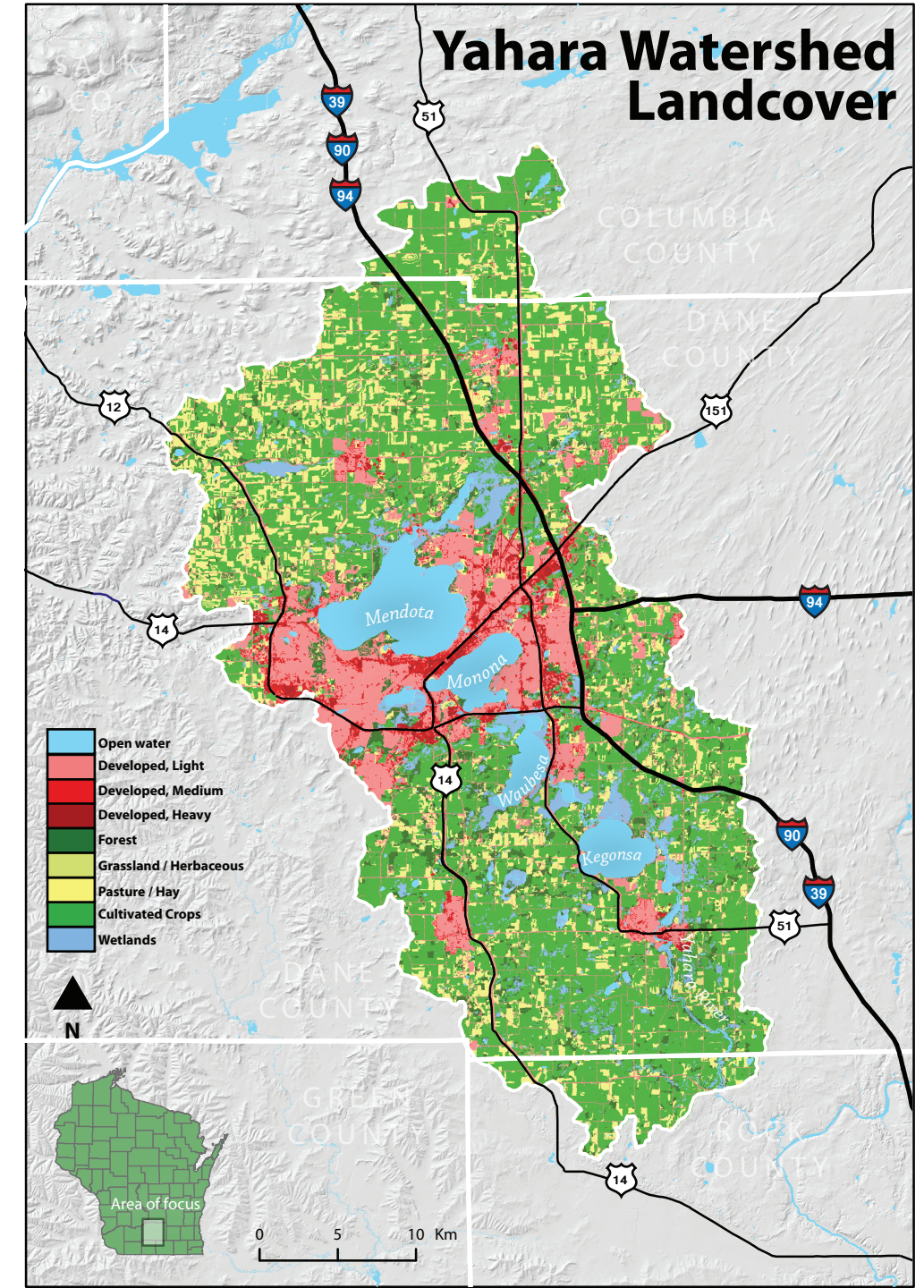
The three maps below were produced for the 5-year National Science Foundation-funded research project *Climate Change, Shifting Land Use, and Urbanization in a Midwestern Agricultural Landscape: Challenges for Water Quality and Quantity*. The project is an interdisciplinary effort from several academic departments at UW – Madison. As one component of the project focuses on public outreach and educational events in the local community, the purpose of these maps is to serve as presentation tools and to provide audience members a spatial and socio-ecological context to understanding the watershed in which they live, work, and play.



The project's water focus calls for a map that shows an audience the large number of lakes and streams in the region. This hydrography reference map presents the entire stream network and open water areas of the Yahara River watershed and surrounding areas. The Yahara system flows into the Rock River, seen at the bottom right.



Another focus of the project is human influence on the ecosystem. The first step to understanding human impact is knowing where people live. This dot density map gives a sense of where population is concentrated within the watershed.



Landcover illustrates both natural phenomenon and human activity. This map presents the majority agricultural makeup of the region, with the densely urban Madison metro area at its center.