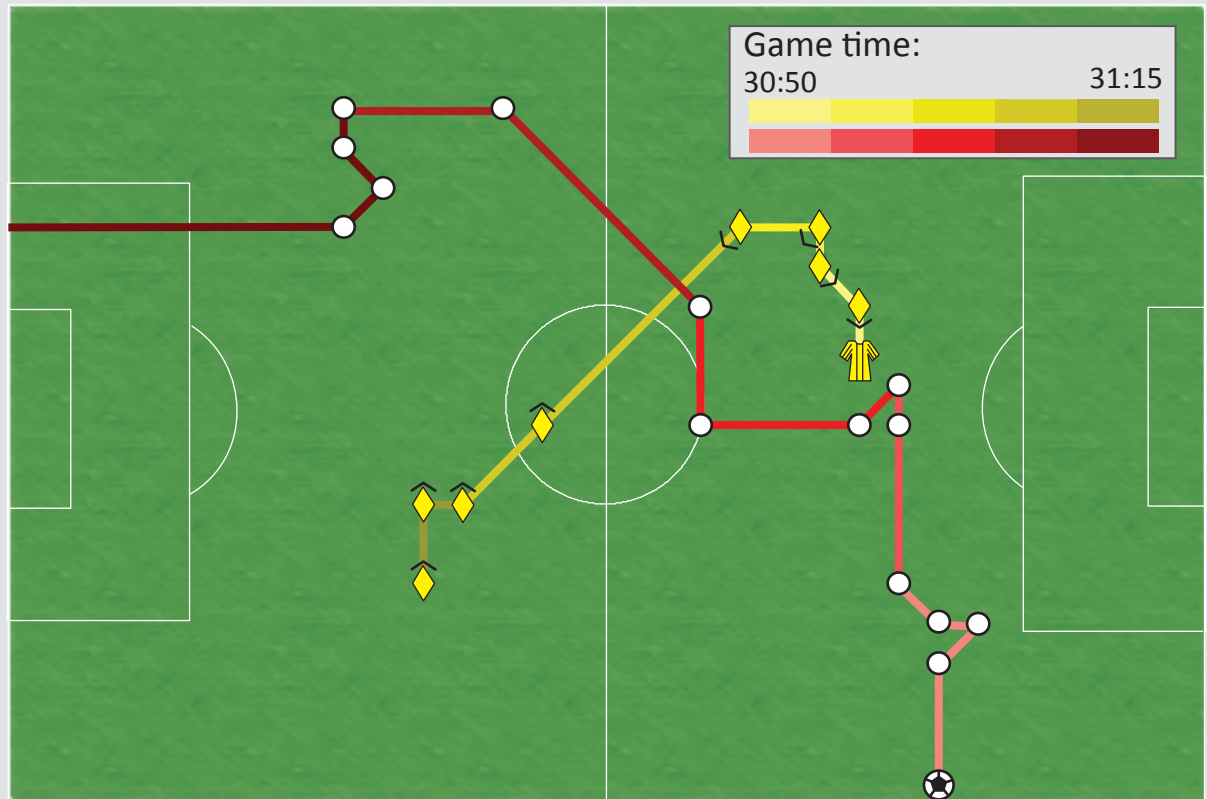


Refereeing: Technique and Positioning

Officiating a sport is always tough, and soccer is no exception. The challenge for the center ref, the only official on the field, starts with the basic problem of covering a field that can range up to 80 x 120 yards; that's a full 9,600 sq yards.



Referee
Starting
Position



Referee
Position



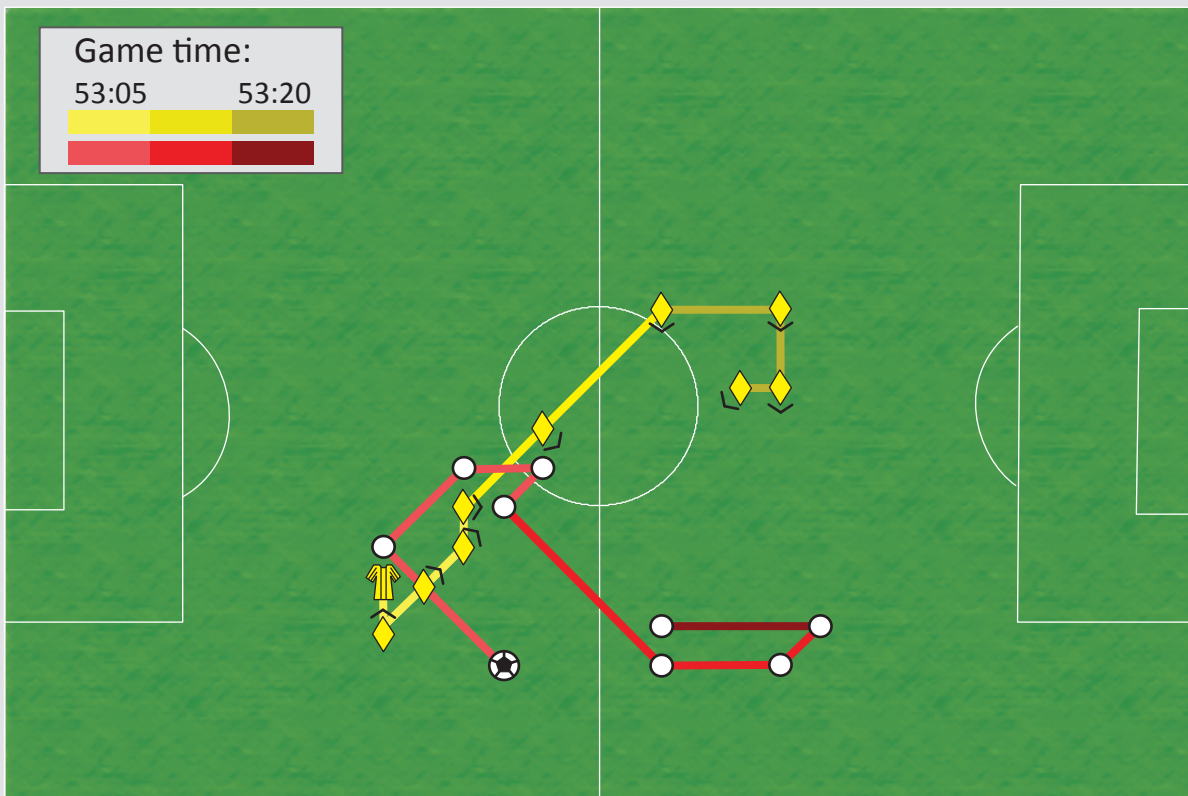
Direction
Referee
is facing



Starting
Position
of Ball



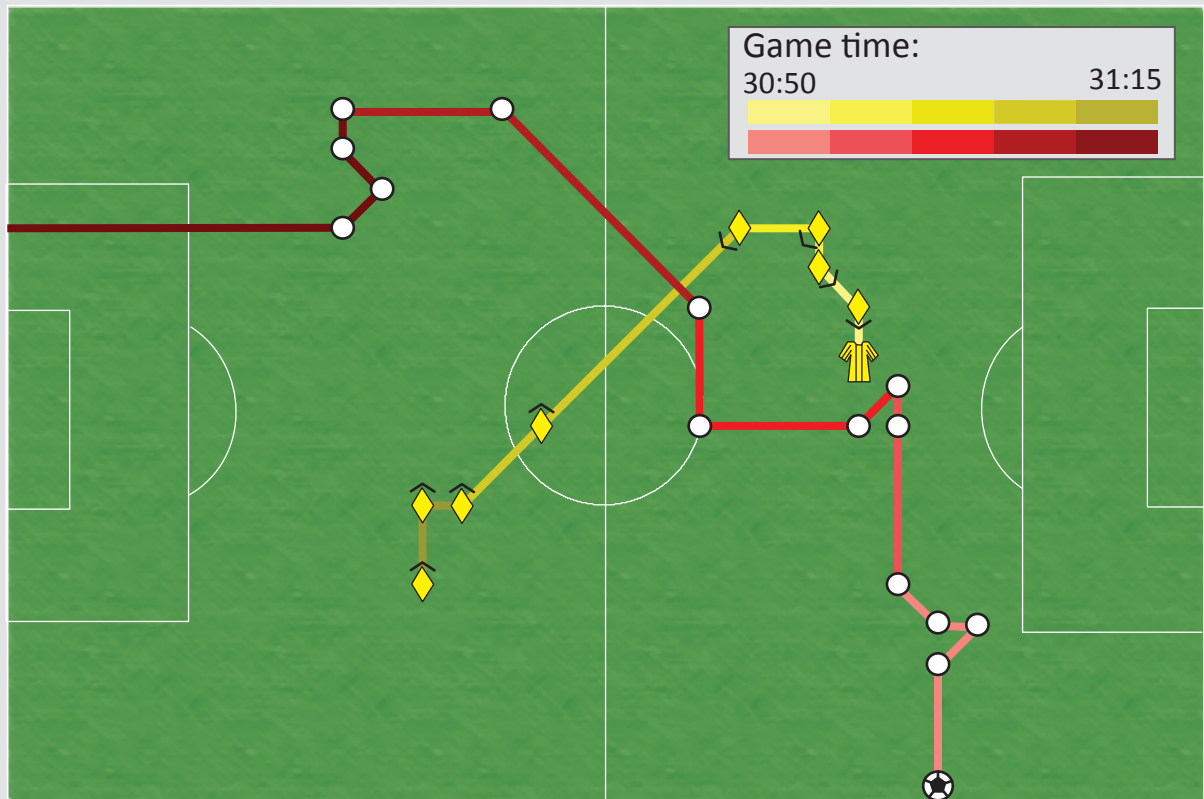
Position
of Ball



The next major hurdle to being effective and fair, is the basic flow of the game; soccer is beautifully complex because the game can shift gears within an instant, and ranges from one touchline to the other. A skilled official must be able to run with the game, while keeping their focus upon the plays and maintaining a wide perspective.

Refereeing: Technique and Positioning

Officiating a sport is always tough, and soccer is no exception. The challenge for the center ref, the only official on the field, starts with the basic problem of covering a field that can range up to 80 x 120 yards; that's a full 9,600 sq yards.



Referee Starting Position



Referee Position



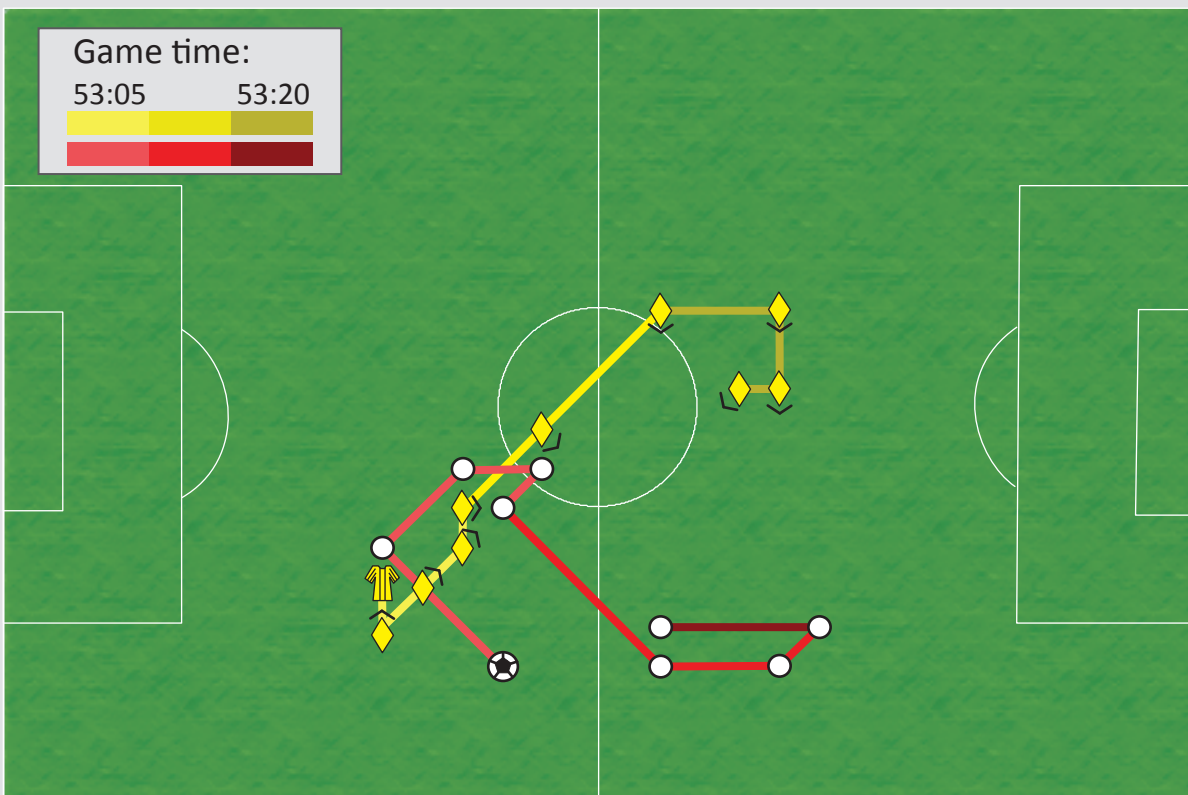
Direction Referee is facing



Starting Position of Ball



Position of Ball



The next major hurdle to being effective and fair, is the basic flow of the game; soccer is beautifully complex because the game can shift gears within an instant, and ranges from one touchline to the other. A skilled official must be able to run with the game, while keeping their focus upon the plays and maintaining a wide perspective.