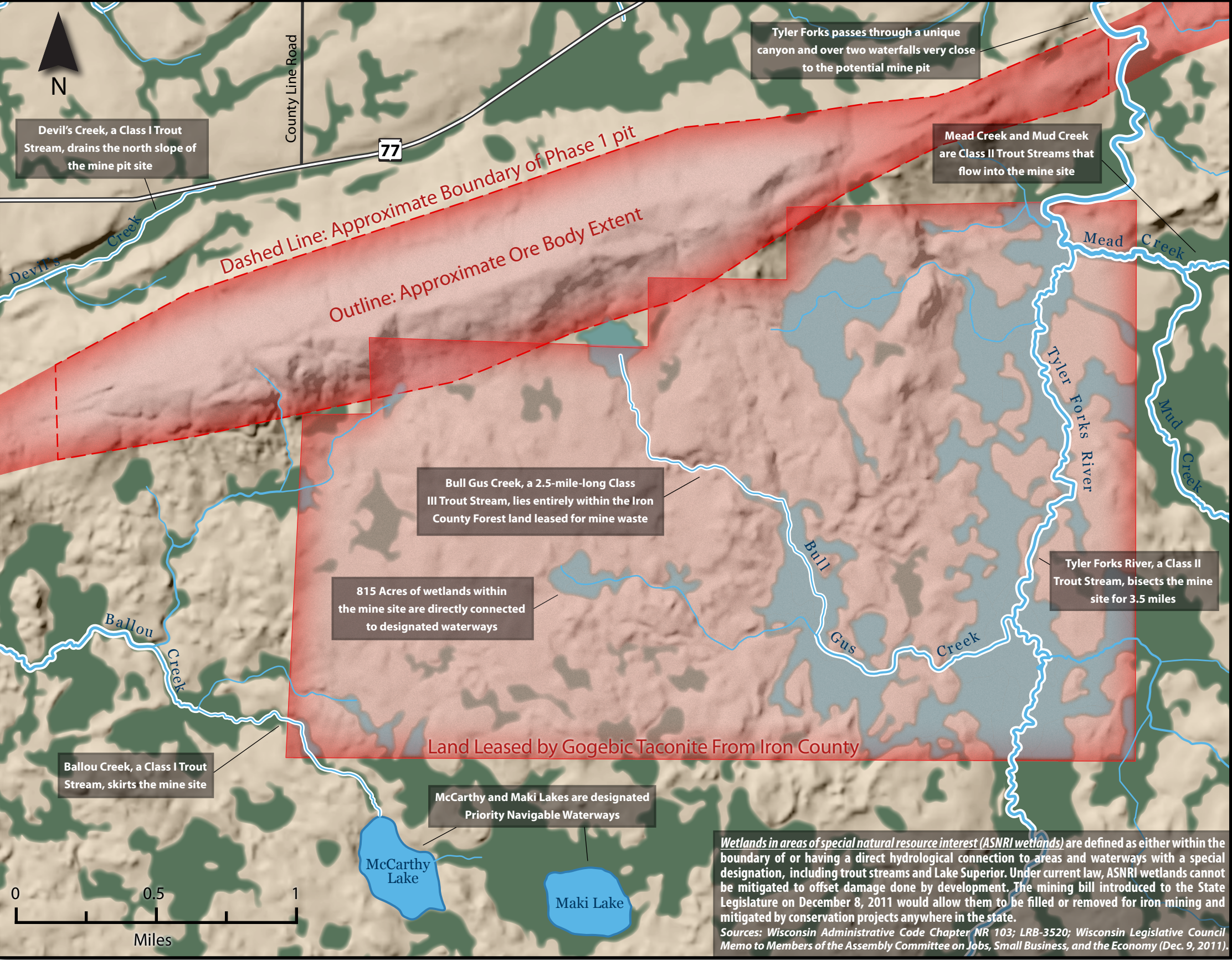
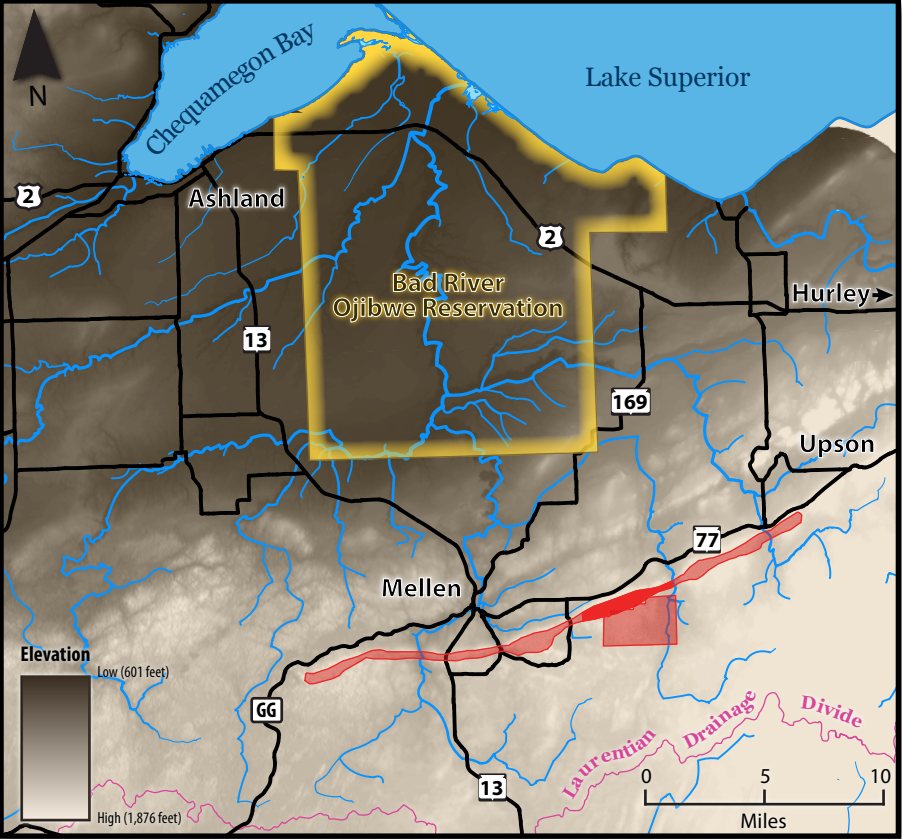


Water On the Line

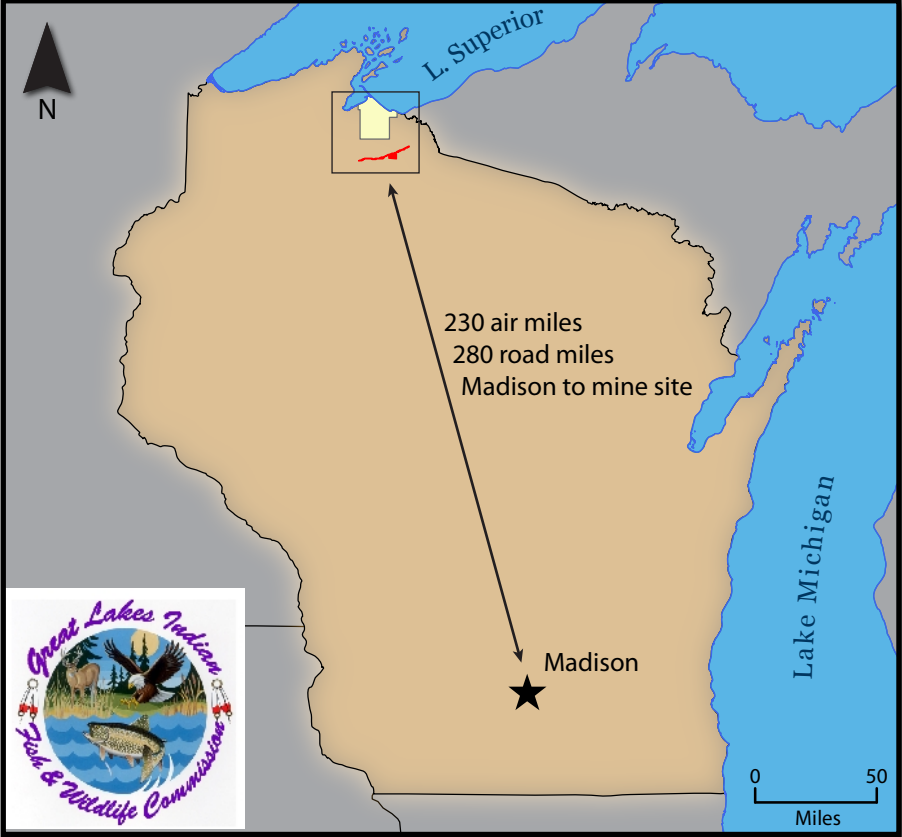
Wisconsin's current environmental laws protect critical wetlands that feed outstanding and exceptional natural resource waters. A proposed new mining law would eliminate that protection.



Proximity of the Penokee Mine to the Bad River Indian Reservation



Location of Gogebic Taconite's Proposed Penokee Iron Mine



Wetlands

ASNRI wetlands threatened by mine

White: Designated Trout Streams

Undesignated Waterways

Datum and Projection: WGS 1984 UTM Zone 15N, Centered at 90.55° W

Wetlands data from US Fish & Wildlife Service National Wetlands Inventory, acquired from the Wisconsin Department of Natural Resources (WDNR).

All hydrology and designated waterways data from WDNR website. Roads from U.S. Census Bureau (Census 2010).

Mine polygons digitized from Great Lakes Indian Fish and Wildlife Commission map, "Area of Potential Taconite Mining" (2011).

Areas and distances measured in ArcMap 10 using above projection.

Insets: WGS 1984 UTM Zone 15N. Elevation data from 30 meter USGS Digital Elevation Model. Waterways and polygons from same sources as wetlands map. Distances derived by measurement in ArcMap 10 (line) and Google Maps (road) respectively. All maps produced by Carl Sack, December, 2011. For non-commercial use. For questions or copies, contact GLIFWC GIS Office: www.glifwc.org, 608-263-2873, edchirib@wisc.edu