

The Scouting Report

Teams: Wisconsin VS Michigan (2 games)
Illinois (2 games)

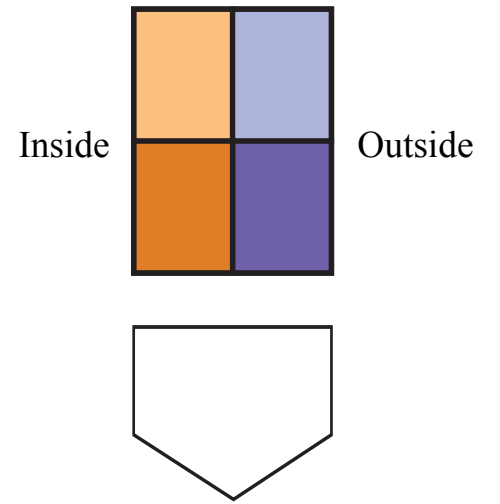


Pitcher: Cassandra Darrah

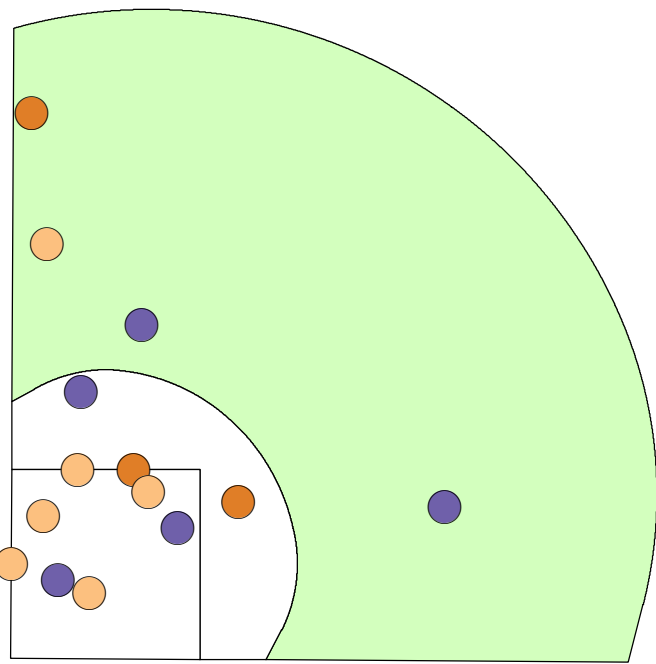
Season Statistics:

Right handed pitcher
ERA: 2.27
Win-loss Record: 22-13
Opponents batting average: .257
Walks: 52

Location of Pitch Visual



Fastball



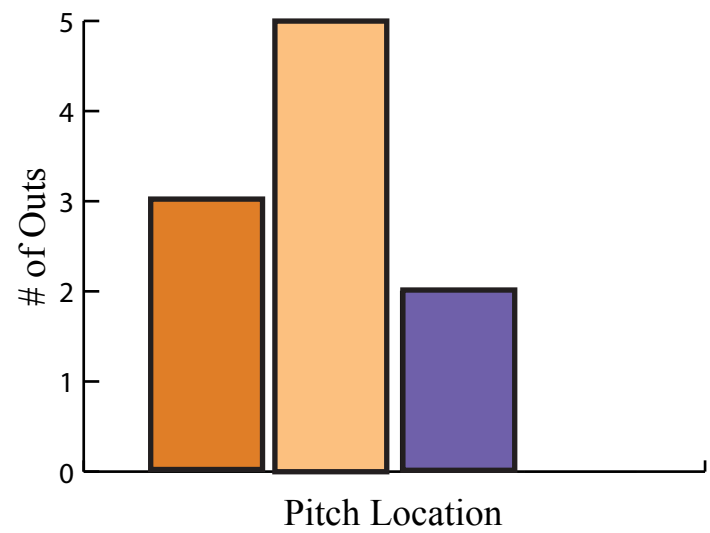
Defensive Suggestions:

Out of the 14 fastballs put in play, 10 of them resulted in an out.

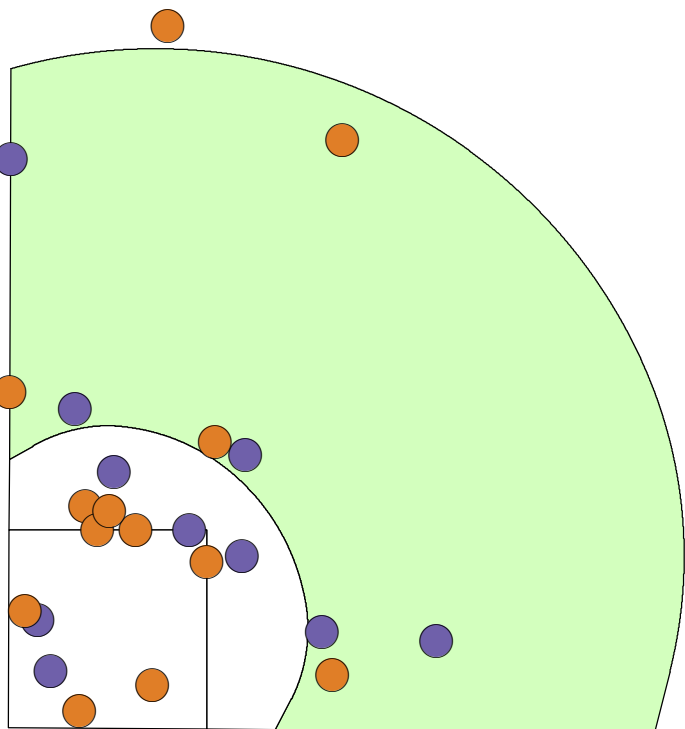
Infield: Shift to the left for hard pulled balls to 3rd base and short-stop. 2nd base to up the middle. Outside pitches mostly pulled or hit up the middle.

Outfield: All shift toward left field. Right field and left field work drop steps for balls hit in the gaps. Left field be ready on the foul line.

Outs Made (Balls in Play) Per Pitch Location:



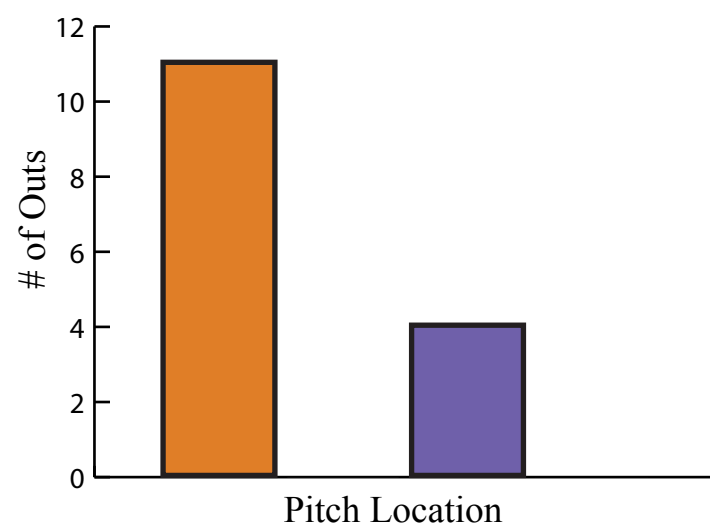
Change up



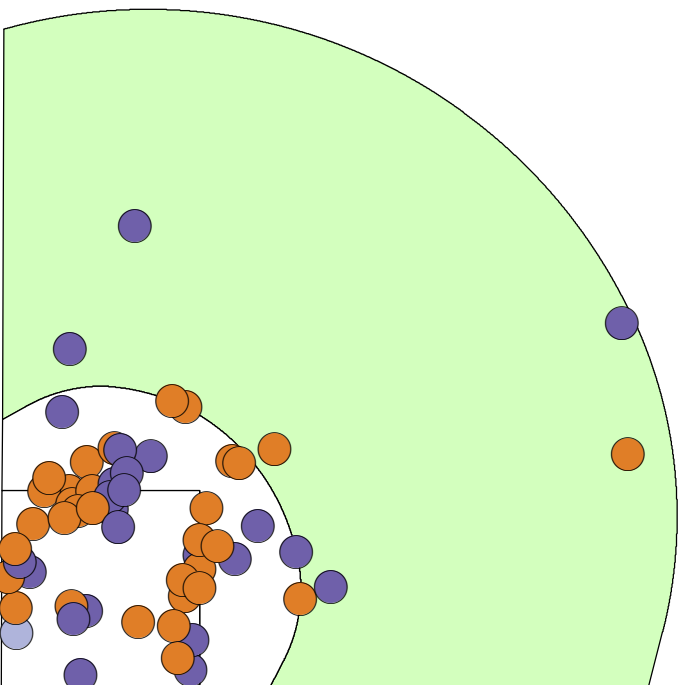
Out of the 23 change ups put in play, 15 of them resulted in an out.

Infield: 1st base and 3rd base play in their normal spot. Short-stop and 2nd base play a little deeper in the infield for fly balls over the infield.

Outfield: Left field stay deep for inside change ups. Right, center, and left fields play in for outside change ups.



Breaking Ball



Out of the 58 breaking balls put in play, 34 of them resulted in an out.

Infield: 3rd base and 1st base be ready for both outside and inside ground balls. Short-stop play inside pitch toward 3rd base and the outside pitch up the middle. 2nd base be ready for the grounder off the inside pitch.

Outfield: Left field play up for inside pitches because batters get jammed. Right, center, and left fields play deep on outside pitches and be ready for balls in the gaps.

