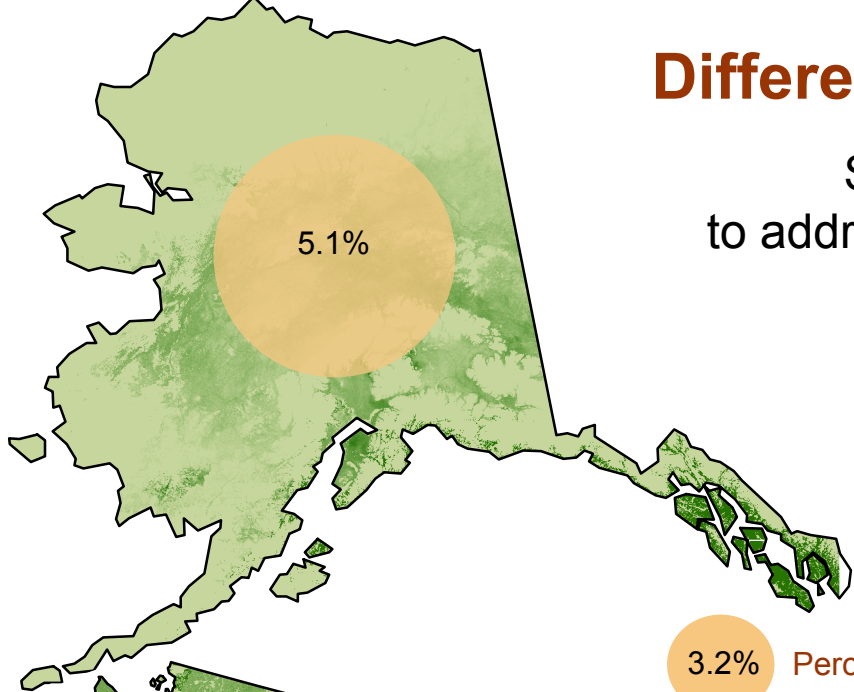


# Different Regions, Different Fire Regimes:

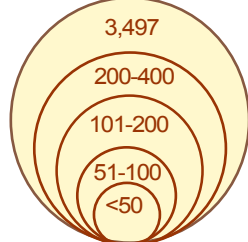
Solutions to the growing wildfire problem need to address regional differences in fire risk and fire behavior.

How much land is burning?

How do the fires start?

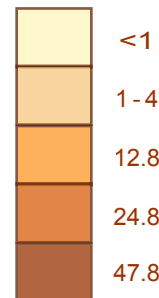


Acreage Burned per Fire\*:

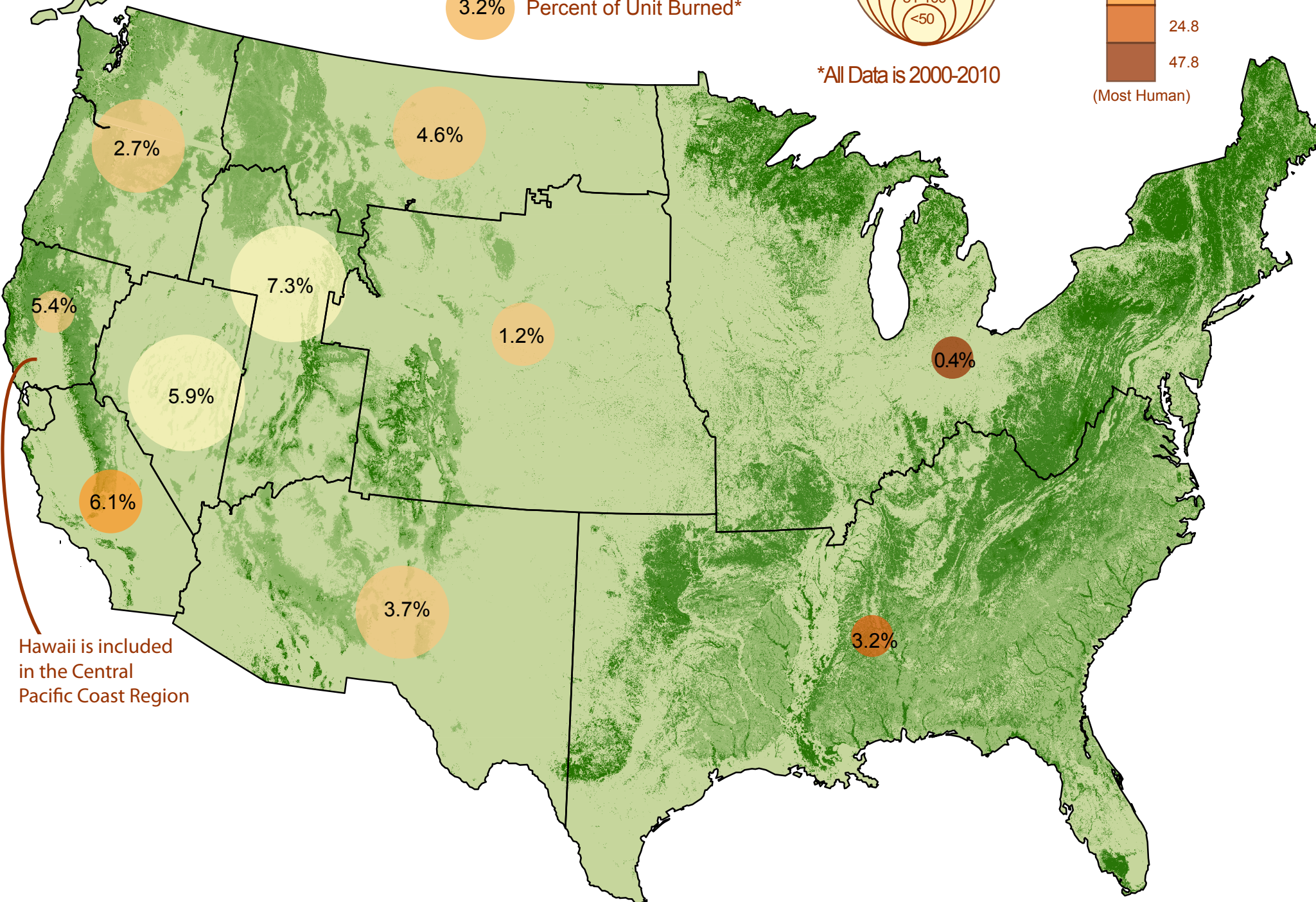


Ratio of Anthropogenic Fires to Lightning Fires\*:

(Most Lightning)

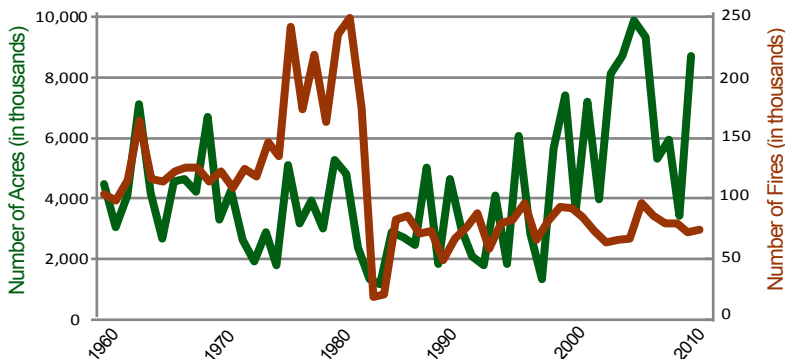


\*All Data is 2000-2010

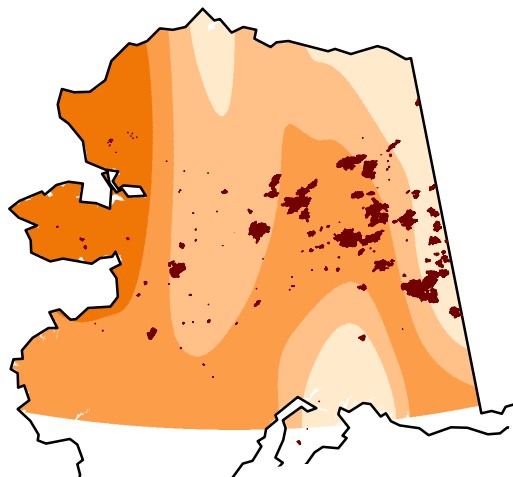


## Nationwide, Wildfire Damages Are Increasing:

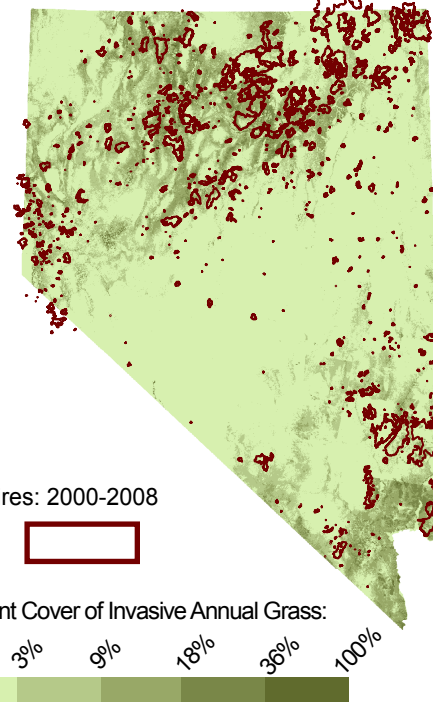
The top 5 worst wildfire years all occurred in the past 10 years.  
(Since record-keeping began in 1960)



### Hot Weather in Alaska:



### New Fuel in Nevada:



### Why?

Each region's fire regime is driven by different local factors, but across the country scientists point to:

1. Increased Fuels
2. Climate Change

Cartographer: Kate Prengaman  
Projection: Albers Equal Area

Main Map: National Interagency Fire Center and U.S. Forest Service  
Alaska Fire Shapefiles: Alaska Geospatial Data Clearinghouse  
Nevada Fire Shapefile: Bureau of Land Management  
Alaska Temperature Data: NASA Goddard Institute for Space Studies  
Nevada Invasive Grass Data: Nevada Natural Heritage Program