

# SHIFTING LANDSCAPES

## CHANGES IN WISCONSIN FARMS

Andrew Wilk

Geo. 370

Professor Robert Roth

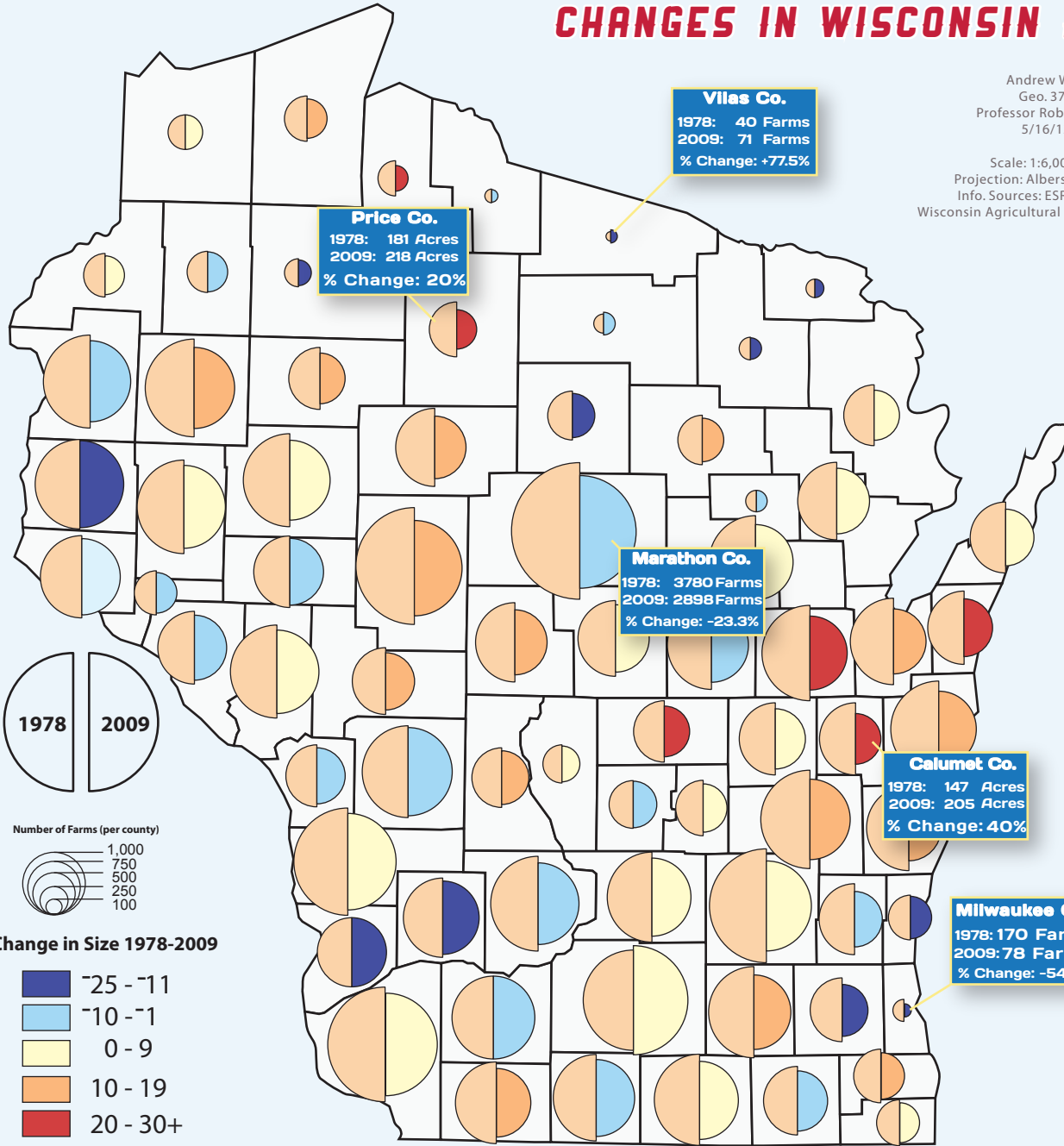
5/16/12

Scale: 1:6,000,000

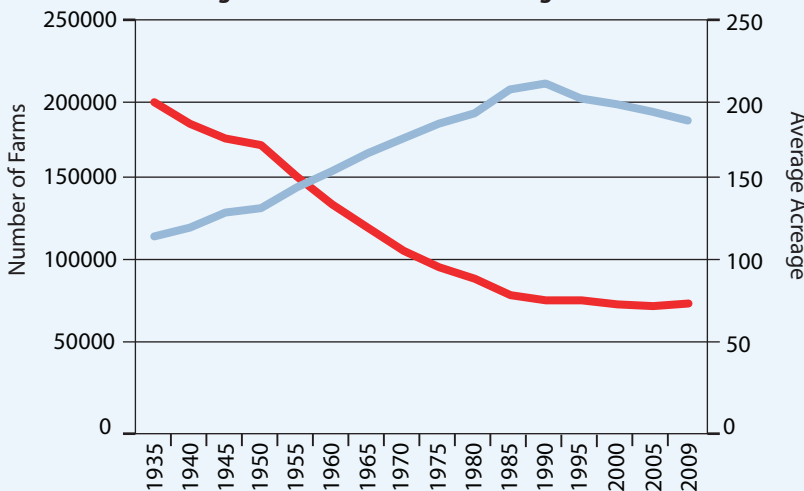
Projection: Albers Equal Area

Info. Sources: ESRI Database

Wisconsin Agricultural Statistics Bulletin



Change in Farm Size and Ave. Acreage 1935-1970



Percent of Wisconsin's Ag. Output By Product

