

College Football Surprises, 2012

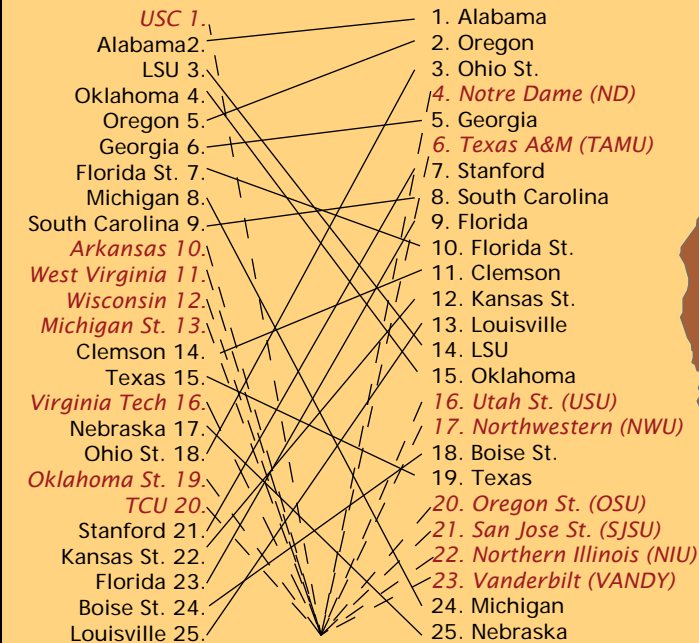
Recruiting Score

2012 Athletic Expenses

What Happened Here?

Preseason Rankings

Final Rankings



Recruitment level by state

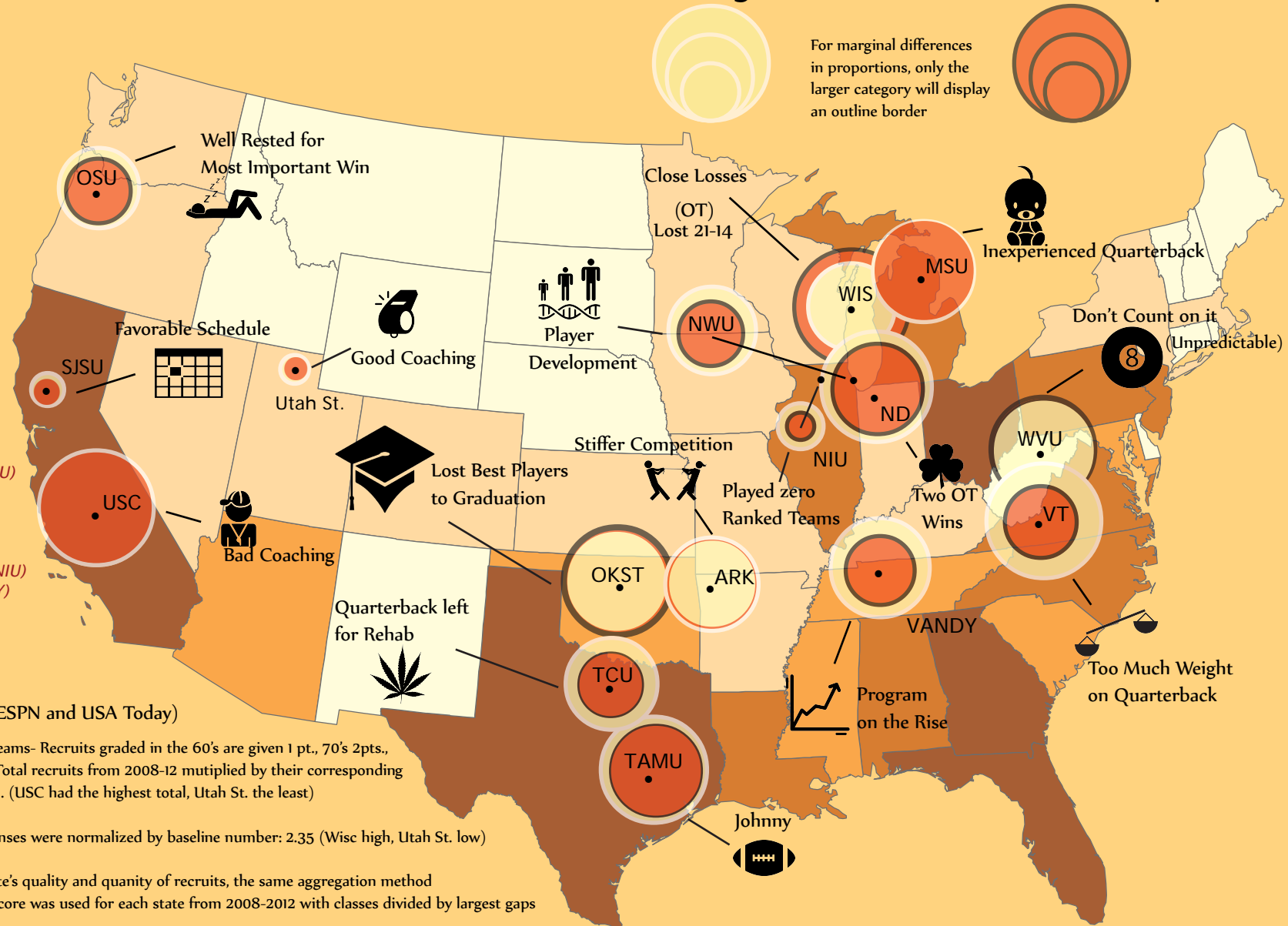


Methology (Per ESPN and USA Today)

Recruiting Score for Teams- Recruits graded in the 60's are given 1 pt., 70's 2pts., 80's 3pts., 90's 4pts. Total recruits from 2008-12 multiplied by their corresponding grade were aggregated. (USC had the highest total, Utah St. the least)

*Expenses - 2012 Expenses were normalized by baseline number: 2.35 (Wisc high, Utah St. low)

States - To judge a state's quality and quantity of recruits, the same aggregation method applied to recruiting score was used for each state from 2008-2012 with classes divided by largest gaps



*For private schools: Northwestern, Notre Dame, TCU, USC, and Vanderbilt expenses are estimates. Data was given for 2008 expenses, and multiplied by the average increase rate from 2008-12 from the sample of the other featured teams