

A PROTECTED RAINFOREST?

PROTECTED AREAS:

The legal Amazon Rainforest spans an area of just under 5 million square kilometers. 43% of that land is considered within protected areas. These protected areas are either Conservation Units (22% of the Amazon) or Indigenous Lands (21%).

Conservation units are territories considered to have natural characteristics that put them under a special administrative regime intended to guarantee their protection. Many of these units, however, lack the necessary level of monitoring to ensure the implementation of their protected status.

Indigenous Territories, with boundaries recognized by the Brazilian government, grant the indigenous residents permanent ownership and use of any wealth originating from that land. There are 173 different indigenous groups that live in 405 different territories in the Amazon. Approximately 300 thousand Brazilian Indians are thought to live in these areas.

THREATS:

Deforestation can have a devastating effect on both ecological and cultural stability in the Amazon. Over 14% of the Amazon in Brazil has been deforested. A growing demand for timber from the Amazon has led to deforestation pressures being put on several protected areas. This has an added layer of impact when happening in Indigenous Territories, where the residents' sustenance depends on a particular type of landscape that is severely altered by the deforestation process.

Mining in the Amazon is another source of significant harm. Mining can contaminate the soil, water, and air. The Brazilian Federal Constitution acknowledges the threat posed by mining, and only allows it to happen in Indigenous Territories under exceptional situations. Yet there are 125 Indigenous Territories, with about 148 thousand people living in them, which have been affected by mining. The depletion of deposits in other parts of Brazil, along with investments in mining research, puts further pressure on the growth of mining activity in the rainforest.

500 MILES

- FORESTED AREAS
- PROTECTED FOREST AREAS
- MINED AREAS
- DEFORESTED AREAS

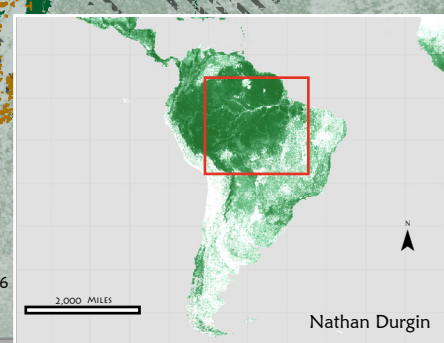
N

B R A Z I L

MANAUS

Projection: GCS_Provisional_S_American_1956
WKID: 4248 Authority: EPSG
Angular Unit: Degree (0.0174532925199433)
Prime Meridian: Greenwich (0.0)

Data Sources:
DNPm <http://www.dnpm.gov.br/conteudo.asp?IDSecao=62&IDPagina=46>
INPE <http://www.dpi.inpe.br/prodesdigital/dados/mosaicos/>
NASA Simard_Pinto_3DGlobalVeg_JGR.tif.gz.crdownload
IBGE <http://mapas.mma.gov.br/i3geo/datadownload.htm?desm76>



Nathan Durgin

Source: http://www.socioambiental.org/banco_imagens/pdfs/AtlasofPressuresandThreatstoIndigenousLandsintheBrazilianAmazon.pdf