

Diverse or Divided?

A closer look at the 2010 race makeup and distribution in Manhattan, the world's most famous melting pot

According to a 2001 study by Claritas, Manhattan ranked 7th among the nation's twenty most diverse counties. While the borough does host a great amount of people from a variety of backgrounds, these different groups are not as evenly distributed throughout its neighborhoods as one may think when hearing Manhattan's diversity ranks in the top 10 in the country. The 2010 Census shows that over 15 neighborhoods such as the Upper East Side, West Village, and East Midtown are over 60% White while 15 neighborhoods are less than 5% Black, 11 are less than 10% Latino, and 13 are less than 10% Asian. Between 2000 and 2010 the white population grew by 58,000, the Asian population grew by 34,333, the Black population declined by 29,000, and the Latino population declined by 14,000.

Frederick Douglass Low Rent Housing Projects

Established in 1958
Population: 4814
Median Income (2010): \$25,000/yr

Amsterdam Houses Public Housing

Established in 1948
Population: 2382
Median Income (2012): \$36,053/yr

Chelsea-Elliott Houses Public Housing

Established in 1947
Population: 1400
Units for both low-income (\$34,800) and medium-income (\$149,760) families

Riis Houses Public Housing

Established 1949
Population: 4305

1 Dot = 10 People

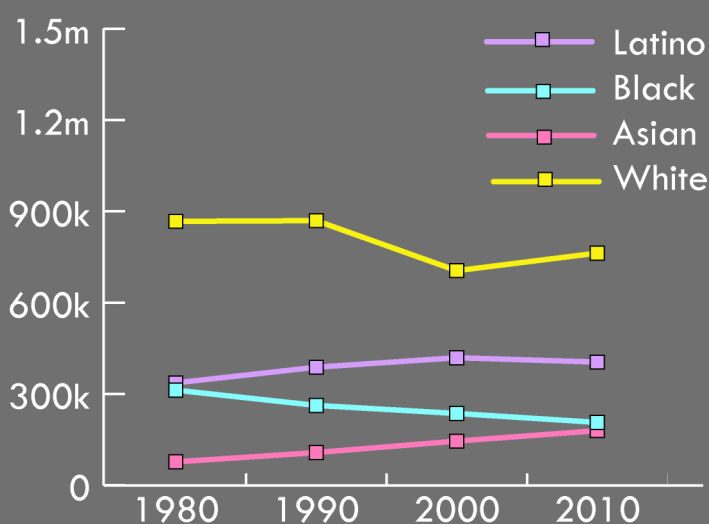
- Latino
- Black
- Asian
- White

77% Latino
10% Black
3% White
(2011)

66% Black
15% White
(2010)

55% Latino
33% Black
21% Foreign-born
(2011)

86% White
(2010)



1 Mile

53% of population foreign-born and 93% of this group emigrated from Asia

Map Author: Mitchell Johnson
Projection: Transverse Mercator, coordinates centered on Manhattan
Data: Center for Urban Research, CUNY Graduate Center
Other Sources: U.S. Census Bureau, Business Wire (Claritas 2001), nyc.gov, Two Bridges Neighborhood Council, NYHCA, areavibes.com
North Arrow design by Antonio Petraglia
Date: 12/16/2014