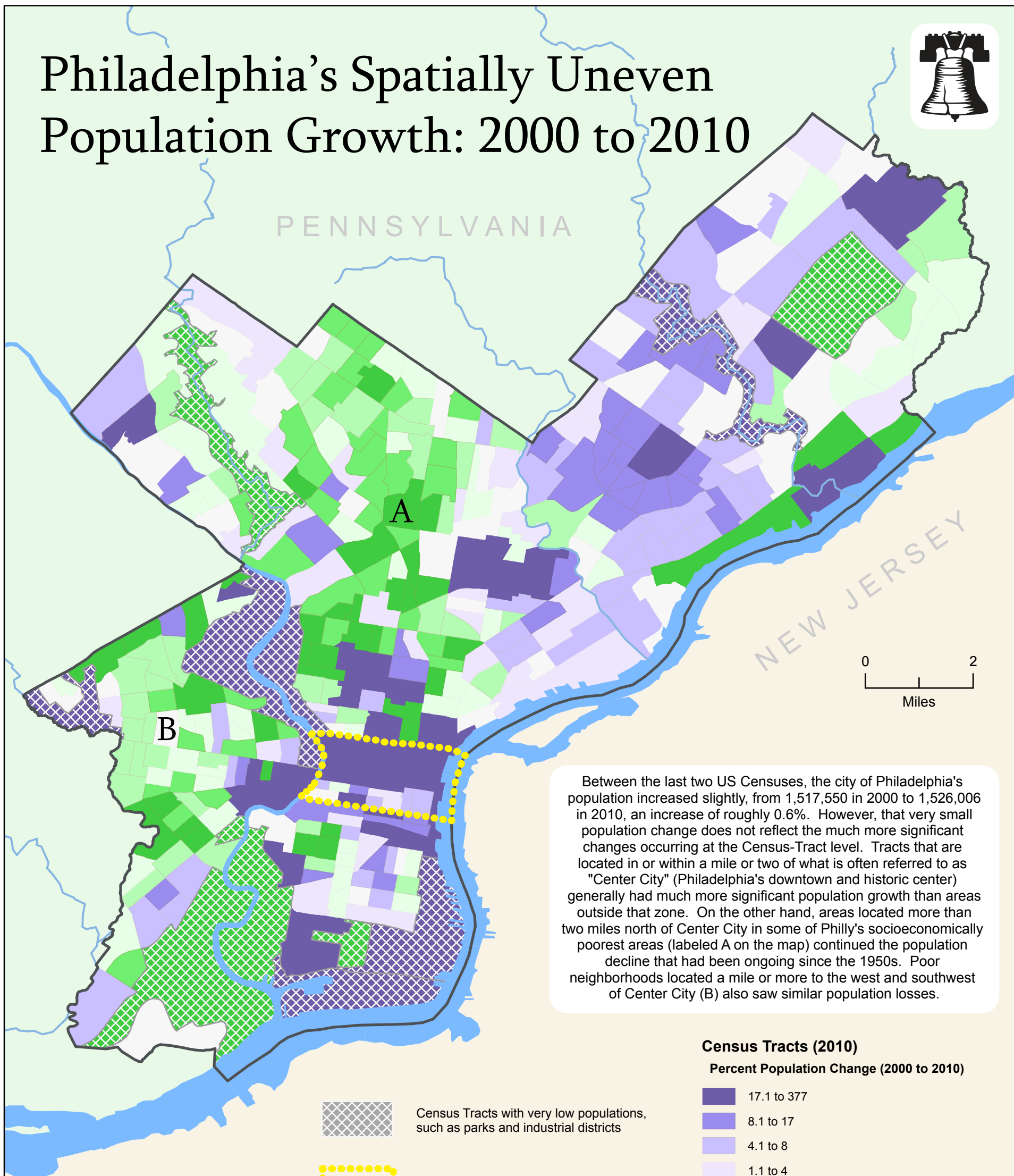



Philadelphia's Spatially Uneven Population Growth: 2000 to 2010




Between the last two US Censuses, the city of Philadelphia's population increased slightly, from 1,517,550 in 2000 to 1,526,006 in 2010, an increase of roughly 0.6%. However, that very small population change does not reflect the much more significant changes occurring at the Census-Tract level. Tracts that are located in or within a mile or two of what is often referred to as "Center City" (Philadelphia's downtown and historic center) generally had much more significant population growth than areas outside that zone. On the other hand, areas located more than two miles north of Center City in some of Philly's socioeconomically poorest areas (labeled A on the map) continued the population decline that had been ongoing since the 1950s. Poor neighborhoods located a mile or more to the west and southwest of Center City (B) also saw similar population losses.

Census Tracts (2010)
Percent Population Change (2000 to 2010)

| |
|---------------|
| 17.1 to 377 |
| 8.1 to 17 |
| 4.1 to 8 |
| 1.1 to 4 |
| -2 to 1 |
| -5 to -2.1 |
| -8 to -5.1 |
| -11 to -8.1 |
| -100 to -11.1 |

 Census Tracts with very low populations, such as parks and industrial districts

 Center City boundary *

* Based on boundary info listed on Wikipedia:
http://en.wikipedia.org/wiki/Center_City,_Philadelphia