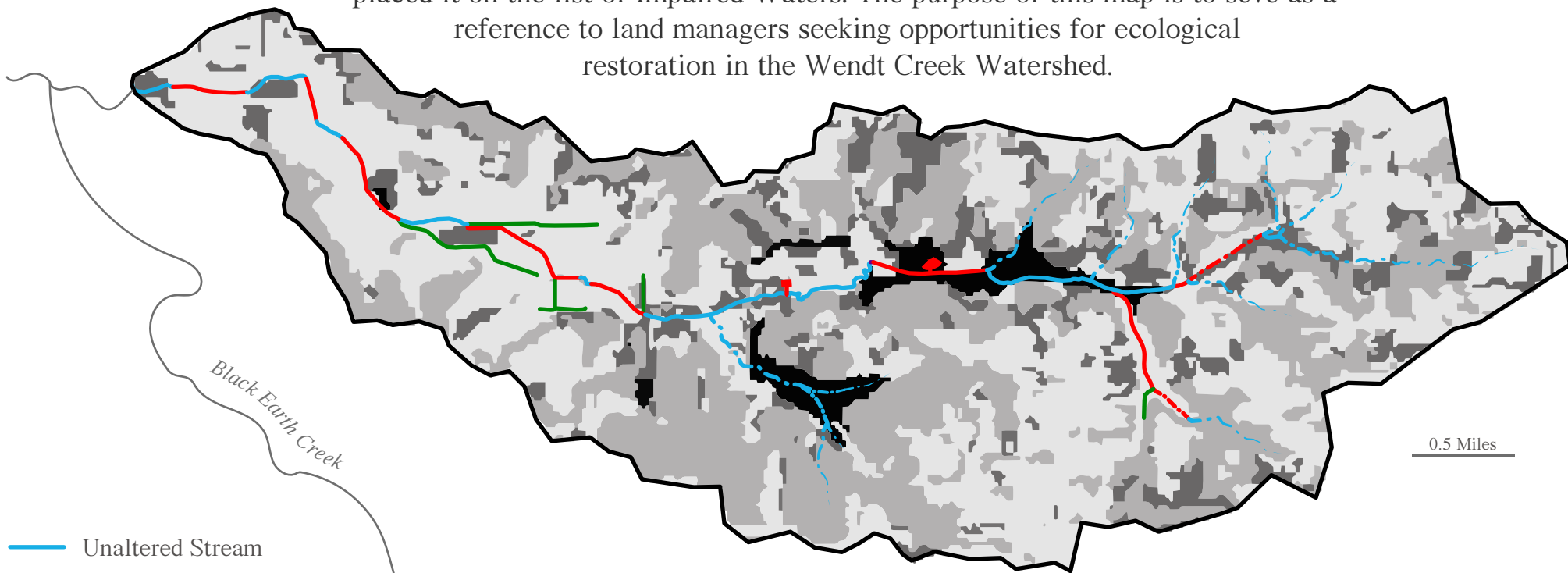




Streamlined

Altered Hydrology of Wendt Creek

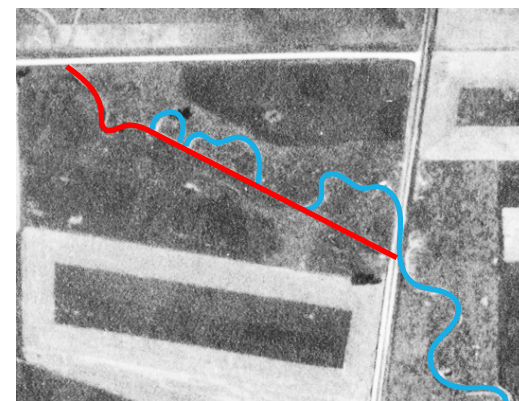
Wendt Creek is a 6-mile long tributary to Black Earth Creek, one of the best trout fishing stream in southern Wisconsin. Alterations to the hydrology of Wendt Creek and agricultural inputs to the watershed have made the stream unsuitable for trout, and the WDNR has placed it on the list of Impaired Waters. The purpose of this map is to serve as a reference to land managers seeking opportunities for ecological restoration in the Wendt Creek Watershed.



- Unaltered Stream
- Channelized Stream
- Drainage Ditch
- - - Intermittent Stream
- - - Intermittent Channel
- ◆ Dammed Spring
- Wendt Creek Watershed
- Cropland
- Forest
- Grassland
- Wetland

Projection: Lambert Conformal Conic
 False Easting: 811000.0
 False Northing: 480943.886
 Central Meridian: -89.4222222222223
 Standard Parallel 1: 43.0695160375
 Scale Factor: 1.0000384786
 Latitude Of Origin: 43.0695160375

This 1937 orthophoto shows a section of the stream that has been channelized for agriculture. The original stream bed is still visible.



Data by: Wisconsin DNR

Map by: Robby Kretz