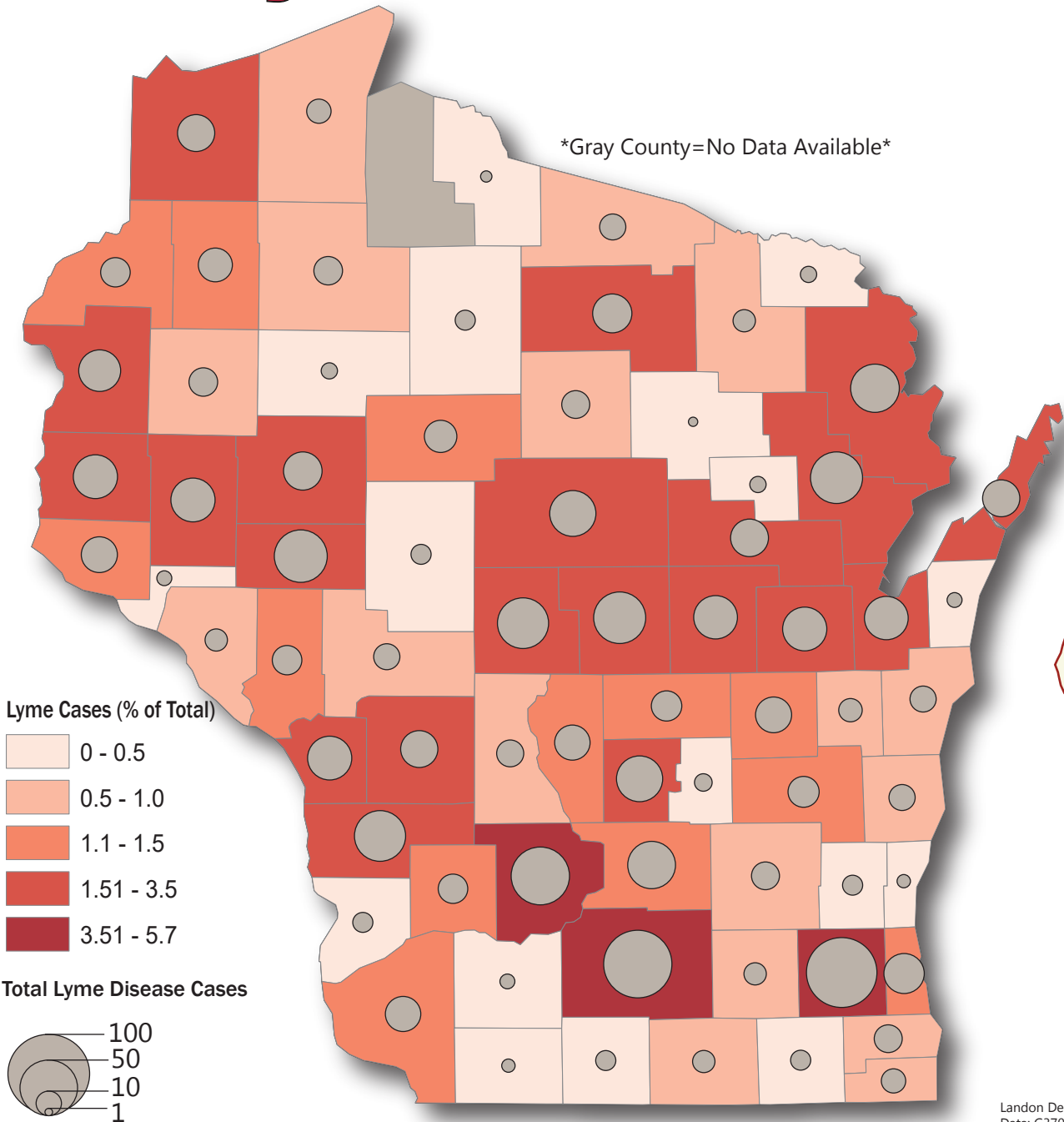


# Lyme in Wisconsin

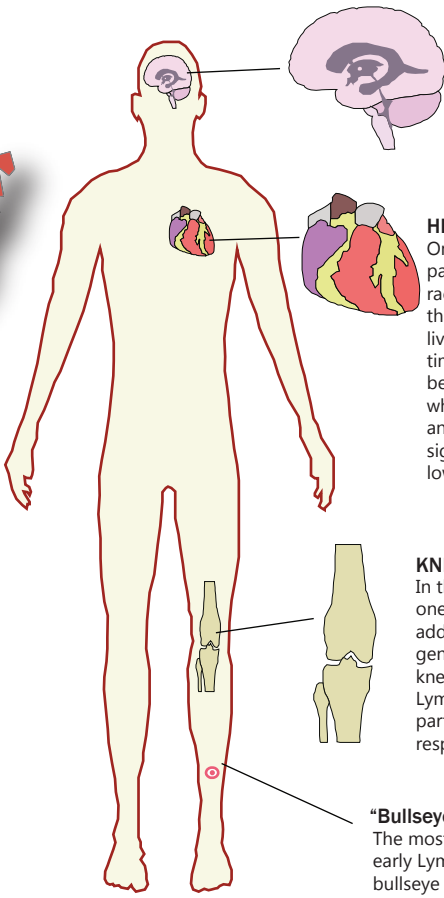


\*Gray County=No Data Available\*

## Signs of Lyme Disease in the human body:

Lyme Disease affects the human body when the bacterium, *Borellia burgdoferi*, makes its way through the different parts of the body triggering immune responses.

\*Red stroke around the body symbolizes a full body fever which is characteristic of Lymes\*



**BRAIN:**  
If Lyme is left untreated, it can cause swelling of the brain known as encephalitis. In addition, the hypothalamus is affected which tricks your body into raising its internal temperature triggering a fever.

**HEART:**  
One with Lyme may experience heart palpitations. Palpitations can be felt as a racing, pounding, fluttering, or skipping of the heart. Lyme Carditis can occur if one lived with Lyme for an extended period of time without treatment. While rare, it can be deadly if left untreated. Lyme Carditis is when the Lyme bacteria reaches the heart and it interrupts the flow of electrical signals from the upper chambers to the lower chambers of the heart.

**KNEES/JOINTS:**  
In the early stages of Lyme disease, one may feel weekness of the joints in addition with swelling. swelling is generally seen in one of the two knees. The swelling is due to the Lyme bacteria migrating to various parts of the body triggering a response from the body.

**"Bullseye" Bite:**  
The most visible characteristic sign of early Lyme Disease is a red ring or bullseye around the location of the bite. If this is seen, one needs to go to the doctor for diagnosis.

Landon Dehnel  
Data: G370\_Lab1\_Data\_Update  
Projection: USA\_Contiguous\_Lambert\_Conformal\_Conic CM: -90.5  
Lyme Data: <https://dhsgis.wi.gov/DHS/EPHTracker/#/map/Lyme%20Disease/lymeIndex/NOTRACT/Cases/lymeCtyIndex1>  
<https://www.cdc.gov/lyme/index.html> <https://www.ncbi.nlm.nih.gov/pmc/articles/PMC5864449/>