

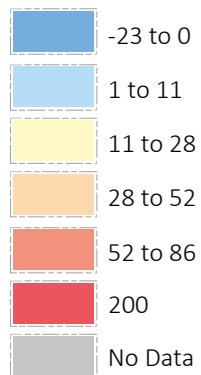
Migration of Working Youths to High Income Provinces Result in Helpless Seniors and Children Left Home Alone



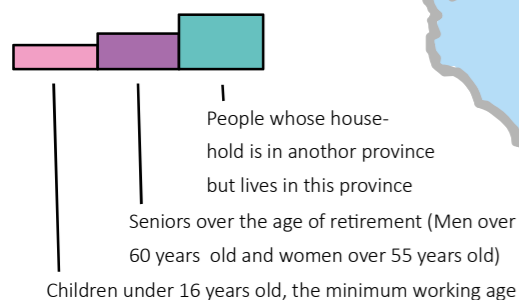
Author: Yuxin Luo

It is vital for the government to develop the poorer provinces and rural areas to prevent severe population imbalance and save helpless seniors and children from being left home alone.

The Change in Population Numbers from 2000 to 2010
(Unit: 100000 people)



Percentage of Provincial Population in 2010



2010 Provincial GDP per Capita

Top Seven	Bottom Seven
1. Shanghai	25. Sichuan
2. Beijing	26. Anhui
3. Tianjin	27. Guangxi
4. Jiangsu	28. Tibet
5. Zhejiang	29. Gansu
6. Inner Mongolia	30. Yunnan
7. Guangdong	31. Guizhou

*The marine borders of China and the Southern Islands are not mapped as they are irrelevant to the topic. This does not mean that they are not part of China.
*Taiwan, Hong Kong and Macao do not have bars in this map due to lack of data, this does not mean that they are not part of China.
*All statistical data used in this map are derived from the fifth and sixth China's National Population Census (years 2000 and 2010 respectively).

Coordinate System: Asia South Albers Equal Area Conic
Datum: WGS 1984
Central Meridian: 105.0000
Standard Parallel 1: 26.0000
Standard Parallel 2: 46.0000
Latitude Of Origin: 36.0000

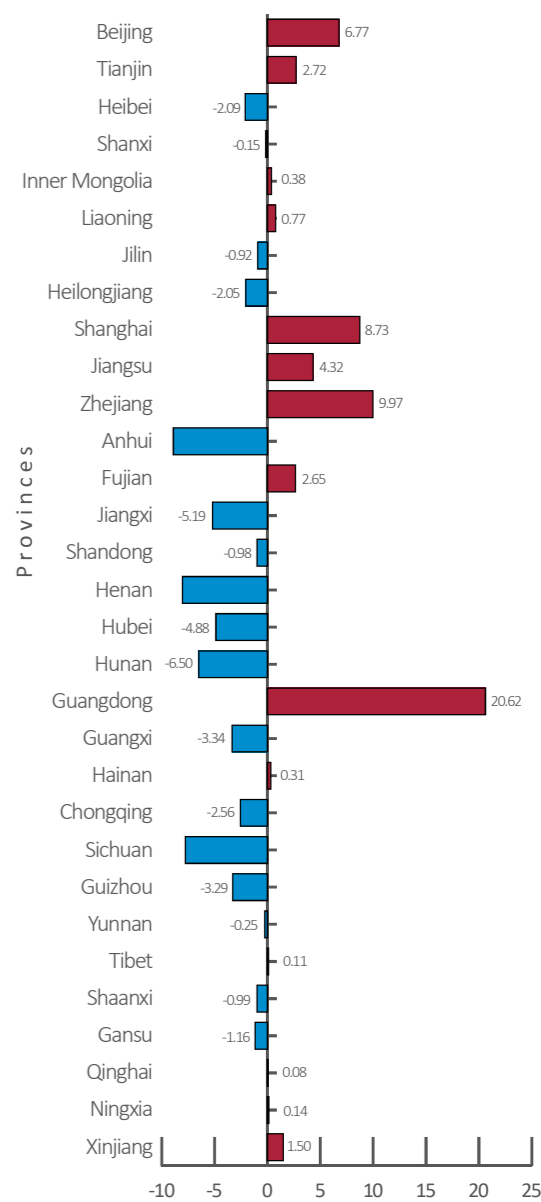
The percentages of children and retired seniors are much smaller than the percentage of outsiders in provinces with high GDP per capita, such as Shanghai, Beijing, and Tianjin. On the other hand, the opposite is observed in provinces with low GDP per capita, such as Sichuan, Anhui, Guangxi, Gansu, Yunnan and Guizhou.

Note that the percentage bars does not account for the people who have changed the province where their household is registered and permanently migrated to another province. Nor does this map display the migration of working youths from villages and towns to large cities within the provinces.

Yunnan is well known for its comfortable climate and clean environment. It is possible that many seniors willingly come here to enjoy retired life.

Many factories are located in Guangdong, offering numerous job opportunities that call people from near and far to flock here. As such, Guangdong has experienced unprecedented exponential growth in both economy and population.

2010 Provincial Population Shift



Population Shift (Unit: 1,000,000 People)

* Calculated by the number of people who live in this province but their household is elsewhere minus the number of people whose household is in this province but lives elsewhere.