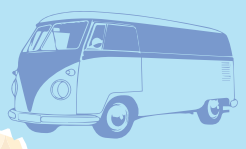


# Dude, Where's Point Place?



Superior

Ironwood

Using distances mentioned in the show around certain cities, I determined the likelihood of Point Place's real location. Estimating that at 60 mph a 2 hour drive would take someone 120 miles, I created a buffer around Chicago, IL. Appleton is considered part of the Oskosh Metropolitan Area at 20 miles away, so a 20 mile buffer surrounds Oskosh. The furthest recognized suburb of Green Bay is Oconto, at 30 miles away, so a 30 mile buffer was created.

Iron Mountain

Rhineland

Marinette

Wausau

Eau Claire

Green Bay

Appleton

Oshkosh

Fond du Lac

Sheboygan

La Crosse

West Bend

Grafton

Madison

Waukesha

Milwaukee

Janesville

Racine

Kenosha

Chicago

Although the creators of *That 70's Show* locate Point Place as a suburb of Green Bay, long-time fans aren't so sure. Geographies mentioned in the show directly contradict this: Kelso claims that it's a two hour drive from Chicago and goes shopping with Jackie in the greater Oshkosh area. A Greyhound bus station and arboretum both exist close to the town as well. In addition, directions given in an early episode tell Donna and Eric to follow Interstate 43 to Wisconsin Highway 60, which occurs in Grafton, WI, far from Green Bay. Based on this information, I would argue that Point Place is likely a suburb of Milwaukee, Oshkosh, or potentially Fond du Lac.

Sources: NaturalEarth Data, Point Place Wikipedia, Green Bay Metropolitan area Wikipedia, List of Botanical Gardens by state Wikipedia, opendata.stackexchange Database of Greyhound Bus Stops, weed by ProSymbols from The Noun Project  
 Projection: USA\_Contiguous\_Albers\_Equal\_Area\_Conic, Standard Parallels: 29.5°, 45.5°, Central Meridian: -90°  
 Cartographer: Zoey Colglazier

Key

- Cities with an Arboretum
- Greyhound Station
- Cities
- Highway Intersection at Grafton
- Greater Oshkosh Area (20 miles)
- Suburbs of Green Bay (30 miles)
- 2 hours from Chicago (120 miles)

**Probable Locations of Point Place**

