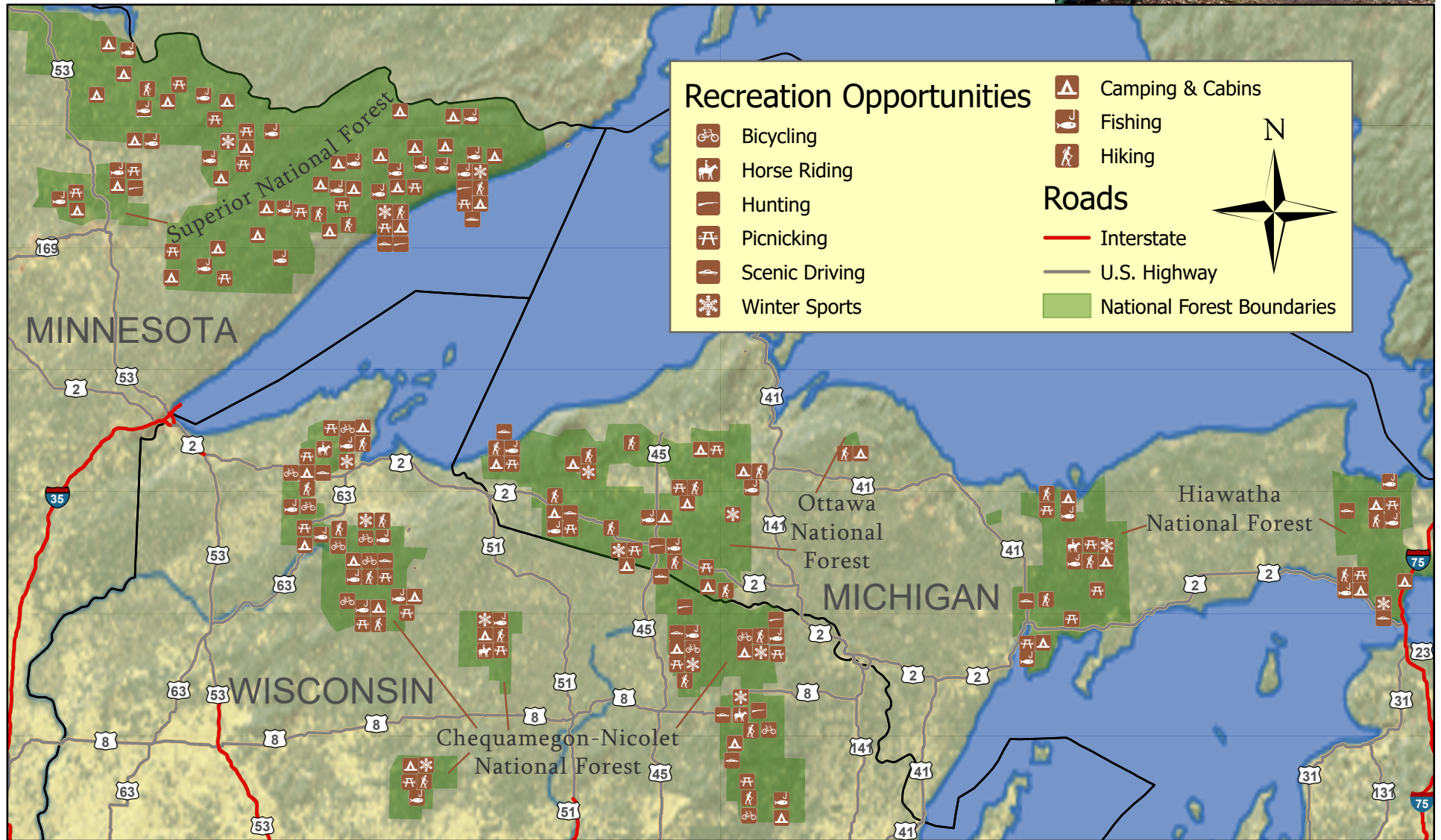
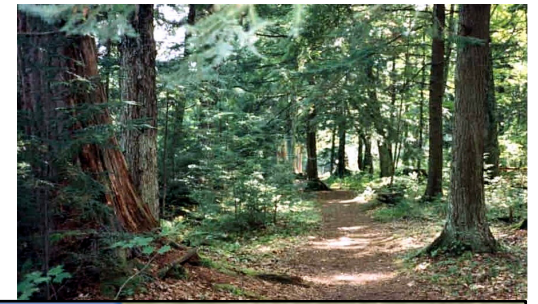
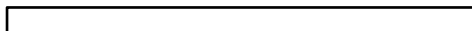


# Recreation Opportunities in Lake Superior-Area National Forests



100 Miles



Author: Dillon Haller, Projection: Albers Equal Area

Data Sources: United States Forest Service, ESRI, Natural Earth Data

Photo Source: Hidden Lakes Trail in the Chequamegon-Nicolet National Forest, courtesy of the US Forest Service

In areas where multiple recreation opportunities of the same type exist in close proximity, a single symbol may be used to represent them all