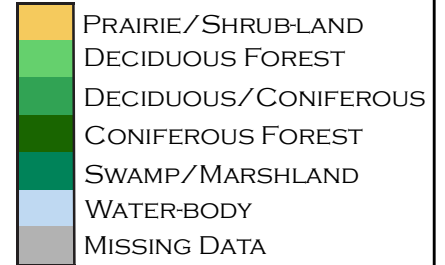
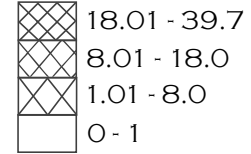


# ORIGINAL WISCONSIN VEGETATION COVER VERSUS 2001 - 2022 TREE COVER LOSS

## BIOME TYPE

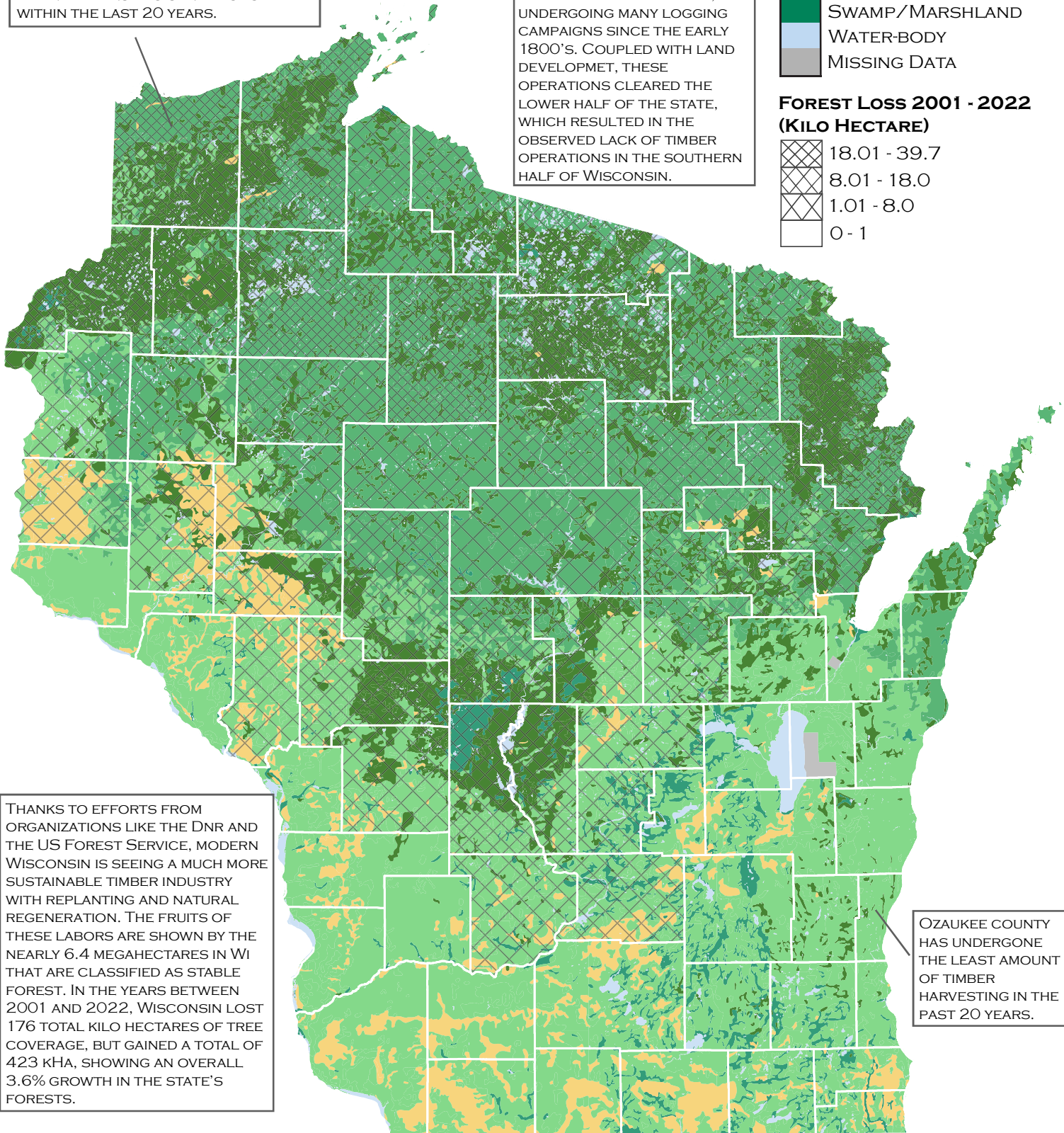


## FOREST LOSS 2001 - 2022 (KILO HECTARE)



DOUGLAS COUNTY HAS SEEN THE MOST TIMBER HARVESTING OPERATIONS IN WI WITHIN THE LAST 20 YEARS.

WISCONSIN HAS SEEN DRASTIC CHANGES IN FOREST TOPOLOGY THROUGHOUT IT'S HISTORY, UNDERGOING MANY LOGGING CAMPAIGNS SINCE THE EARLY 1800'S. COUPLED WITH LAND DEVELOPMENT, THESE OPERATIONS CLEARED THE LOWER HALF OF THE STATE, WHICH RESULTED IN THE OBSERVED LACK OF TIMBER OPERATIONS IN THE SOUTHERN HALF OF WISCONSIN.



THANKS TO EFFORTS FROM ORGANIZATIONS LIKE THE DNR AND THE US FOREST SERVICE, MODERN WISCONSIN IS SEEING A MUCH MORE SUSTAINABLE TIMBER INDUSTRY WITH REPLANTING AND NATURAL REGENERATION. THE FRUITS OF THESE LABORS ARE SHOWN BY THE NEARLY 6.4 MEGAHECTARES IN WI THAT ARE CLASSIFIED AS STABLE FOREST. IN THE YEARS BETWEEN 2001 AND 2022, WISCONSIN LOST 176 TOTAL KILO HECTARES OF TREE COVERAGE, BUT GAINED A TOTAL OF 423 KHA, SHOWING AN OVERALL 3.6% GROWTH IN THE STATE'S FORESTS.

OZAUKEE COUNTY HAS UNDERGONE THE LEAST AMOUNT OF TIMBER HARVESTING IN THE PAST 20 YEARS.

0 25 50 MILES

