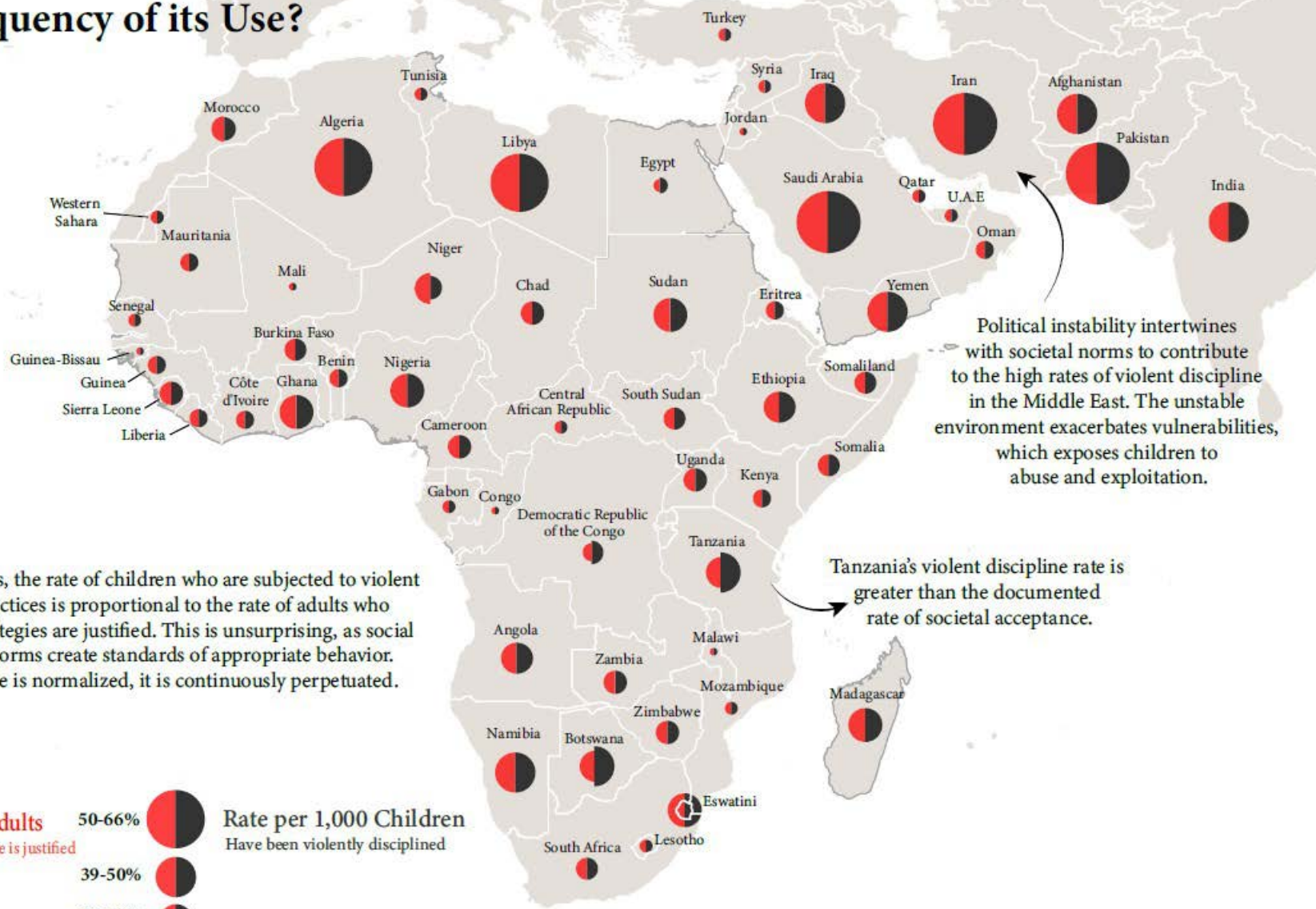


How Does Societal Acceptance of Violent Discipline Affect the Frequency of its Use?



In most countries, the rate of children who are subjected to violent discipline practices is proportional to the rate of adults who believe such strategies are justified. This is unsurprising, as social and cultural norms create standards of appropriate behavior. When violence is normalized, it is continuously perpetuated.

Political instability intertwines with societal norms to contribute to the high rates of violent discipline in the Middle East. The unstable environment exacerbates vulnerabilities, which exposes children to abuse and exploitation.

Tanzania's violent discipline rate is greater than the documented rate of societal acceptance.