

## To-Do List:

Initial steps upon opening an .AI document that has been exported from ArcMap

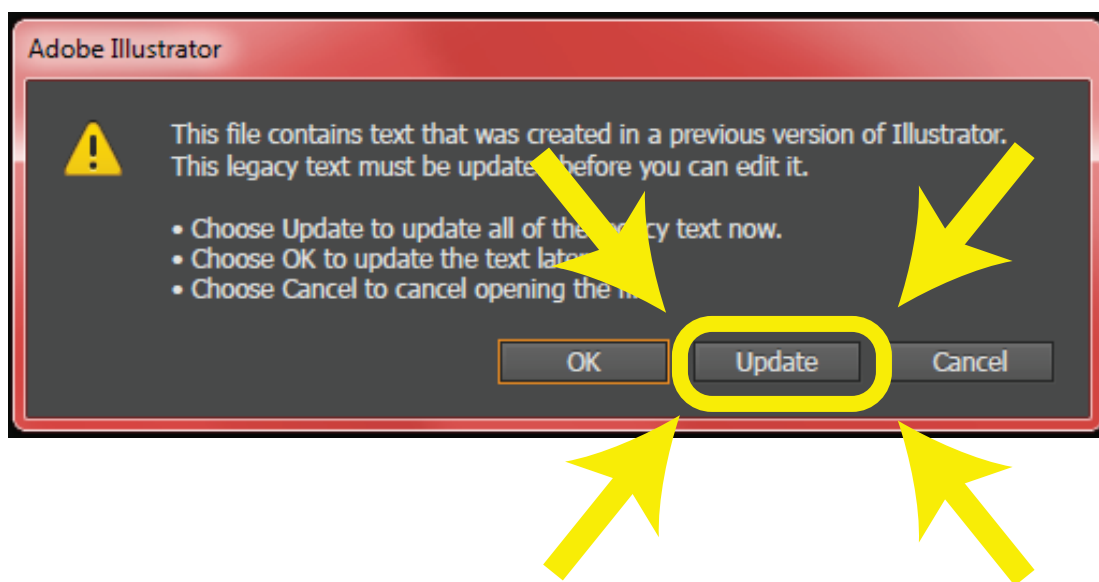
1. Update labels.
2. Release all clipping masks and delete the mask.
3. Ungroup all items.
4. Update font sizes.

### Step 1: Update labels.

When you first open your .AI document in Illustrator, you will get this popup.

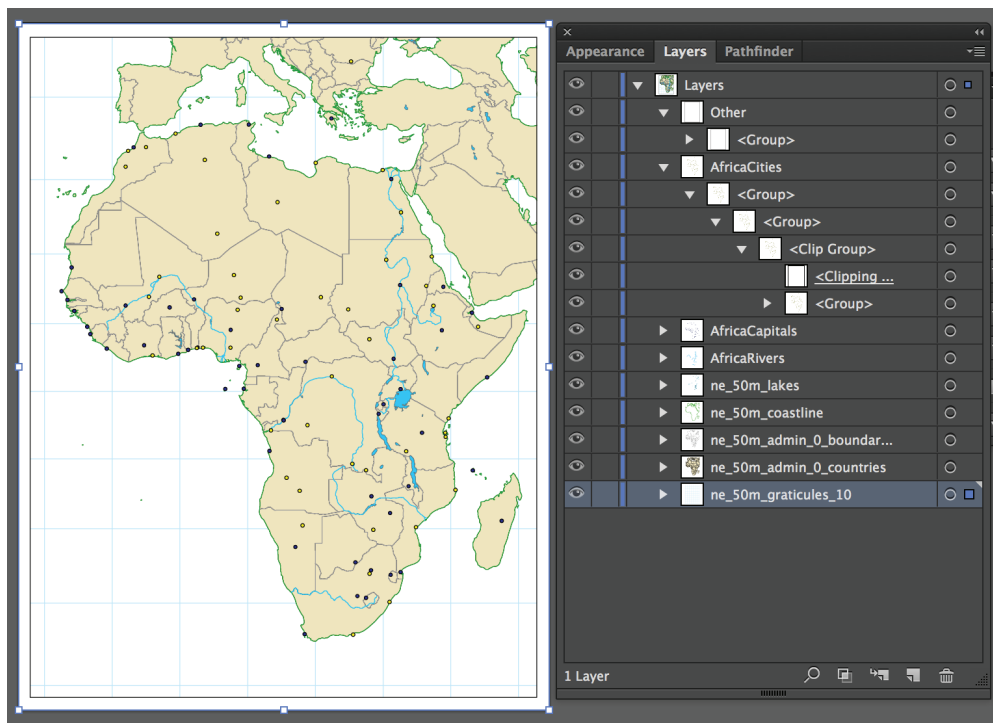
DO NOT PASS GO, DO NOT COLLECT \$200, DO NOT HIT OK!

Make sure to select **Update**. Otherwise, you won't be able to see your labels.



## Step 2: Release all clipping masks.

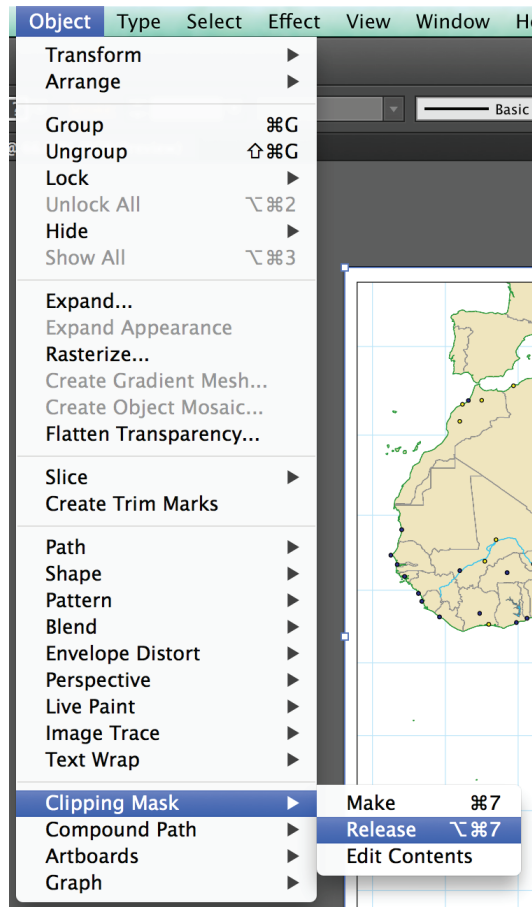
Click anywhere on the map with the Selection Tool (black arrow). You will notice that everything is selected and that you can't select an individual feature on the map. This is because when ArcMap exports an .AI document, it puts a clipping mask on the entire map that is the extent of the data frame (in other words, the frame surrounding your map in Layout View in ArcMap).



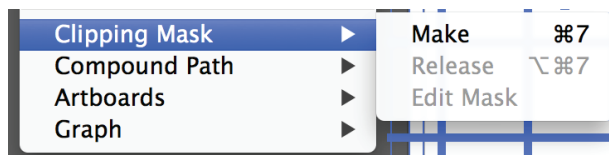
Expand your layers panel so that you can see what's going on. Notice above that the AfricaCities layer is expanded: you'll see that there are a series of nested groups, and the inner group is called '<Clip Group>' and there is a '<Clipping Mask>' inside of it. This is what we want to get rid of. Like most things in Illustrator, there are multiple ways to do this, I will show you just one.

**Step 2 continued:** Release all clipping masks.

Go to the **Object** menu, then **Clipping Mask > Release**.

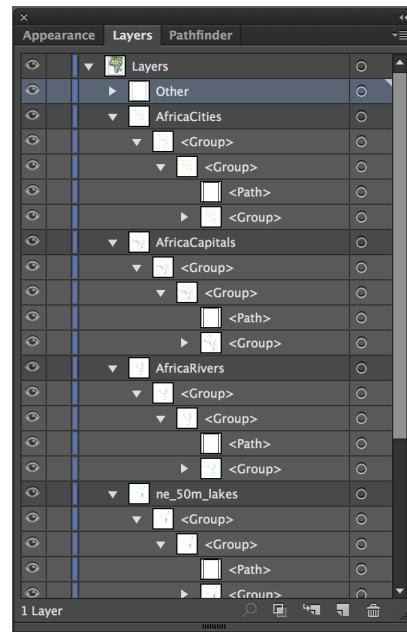


Repeat until the Release option is grayed out, meaning you have successfully released all of your clipping masks.



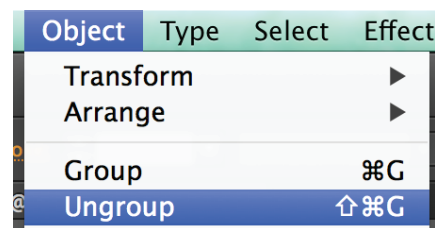
### Step 3: Ungroup everything.

Going back to our Layers panel, expand all of your layers to inspect what's inside them. You'll see that nested series of groups again. We want to *ungroup* everything so that we can manipulate individual features.

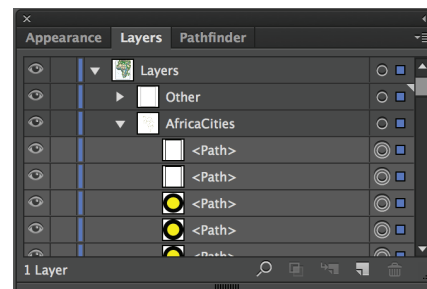


To do that, go to **Object > Ungroup**.

You'll notice that there is a keyboard shortcut next to the word Ungroup: Shift + Control + G (on Windows) or Shift + Command + G (on Mac)

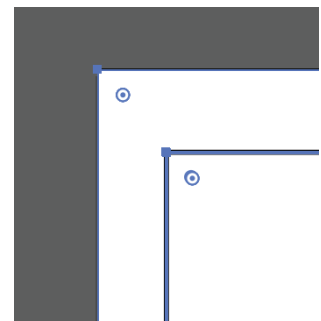


Keep ungrouping until there aren't any groups left. Your layers panel shouldn't have any groups! Check out each layer just to be sure.



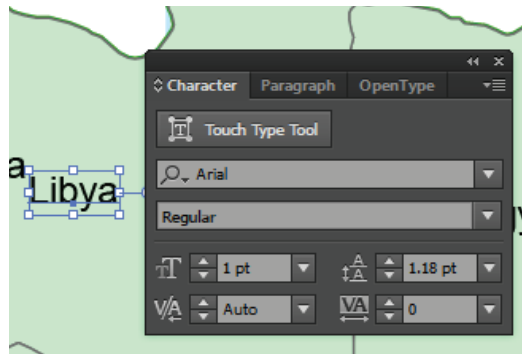
Now that everything is ungrouped, you can select and then delete those clipping masks that we brought in from ArcMap.

Using the *Selection* tool, draw a little box around the top-left corner of your page. You should see some rectangles are selected. Delete these.




#### Step 4: Fix the font sizes.

For some reason, when ArcMap exports labels to .AI, when you open up the file, it says that they are all 1pt. size. See that the Libya label below is selected and the size says 1pt.



In reality, however, it's not actually 1pt, or it would be illegible. So we need to trick Illustrator into reading the actual font size. We do this by using the **Scale** tool, found in the **Transform** menu.

First, select all of the text. You can access this either by going to **Object > Transform > Scale**, or right-clicking anywhere on the map once you have your items selected and then go to **Transform > Scale**. Or select  on your toolbar and hit Enter.

Under Scale > Uniform, type in **100.001%**. What we are doing here is telling Illustrator to make the font size 100.001% of its current size (in other words, essentially the same size). For whatever reason, this tricks the computer into recognizing the actual font size. Notice it now says 7.92pt instead of 1pt (though yours may say something a little different).

